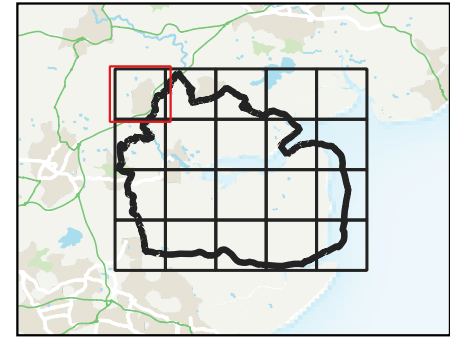



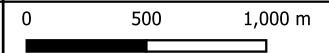


MALDON DISTRICT COUNCIL LEVEL 1 STRATEGIC FLOOD RISK ASSESSMENT



Legend

-  Maldon District Boundary
- Reservoir flood extents**
-  Dry day extent
-  Wet day extent



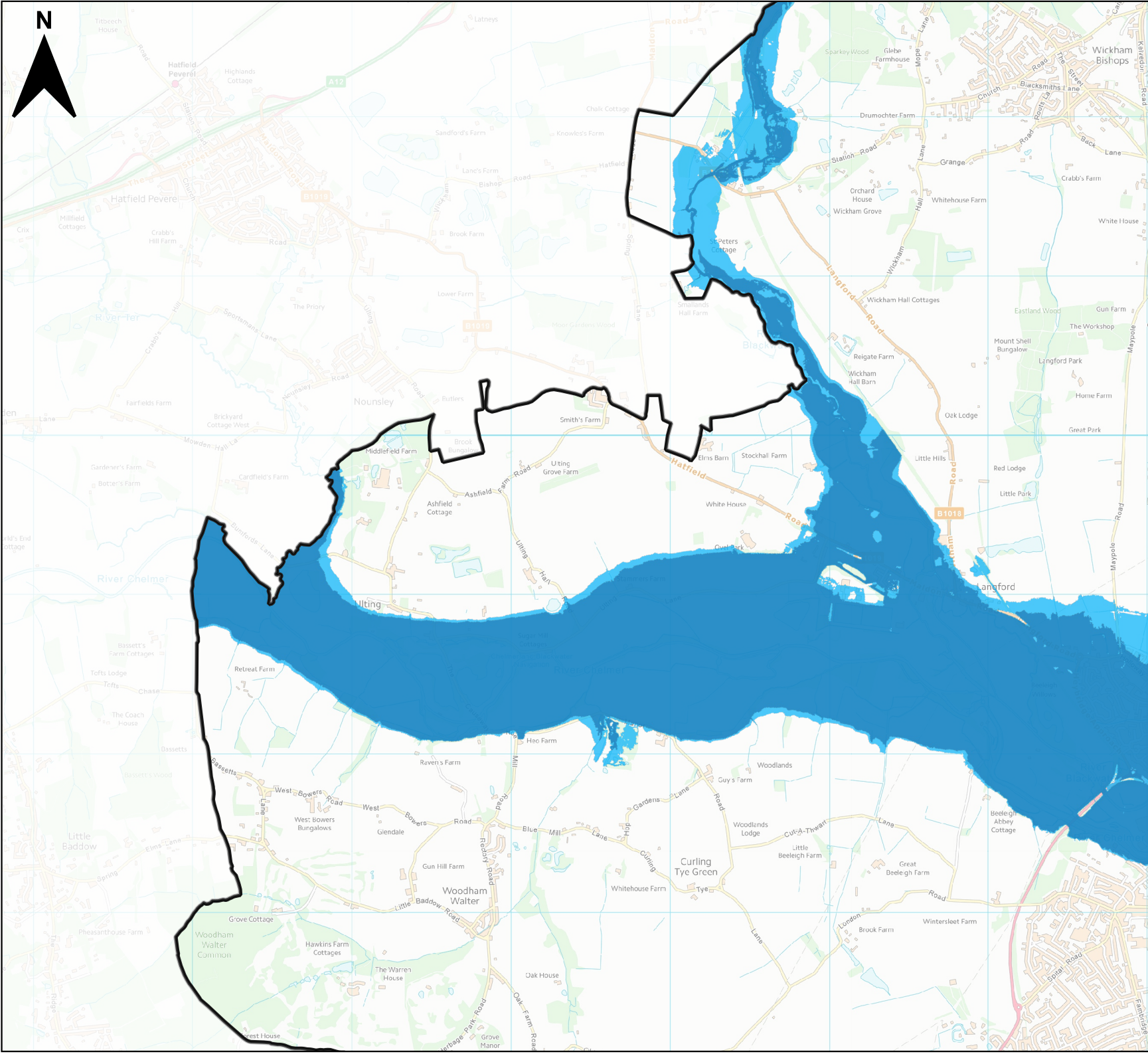
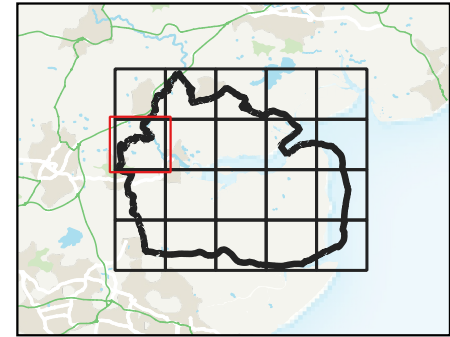
Contains Ordnance Survey data © Crown copyright and database right 2023.
 Contains Environment Agency Information © Environment Agency and database right 2023. All rights reserved.

This document is the property of Jeremy Benn Associates Ltd. It shall not be reproduced in whole or in part, nor disclosed to a third party, without the permission of Jeremy Benn Associates Ltd.






N

MALDON DISTRICT COUNCIL LEVEL 1 STRATEGIC FLOOD RISK ASSESSMENT



Legend

-  Maldon District Boundary
- Reservoir flood extents**
-  Dry day extent
-  Wet day extent

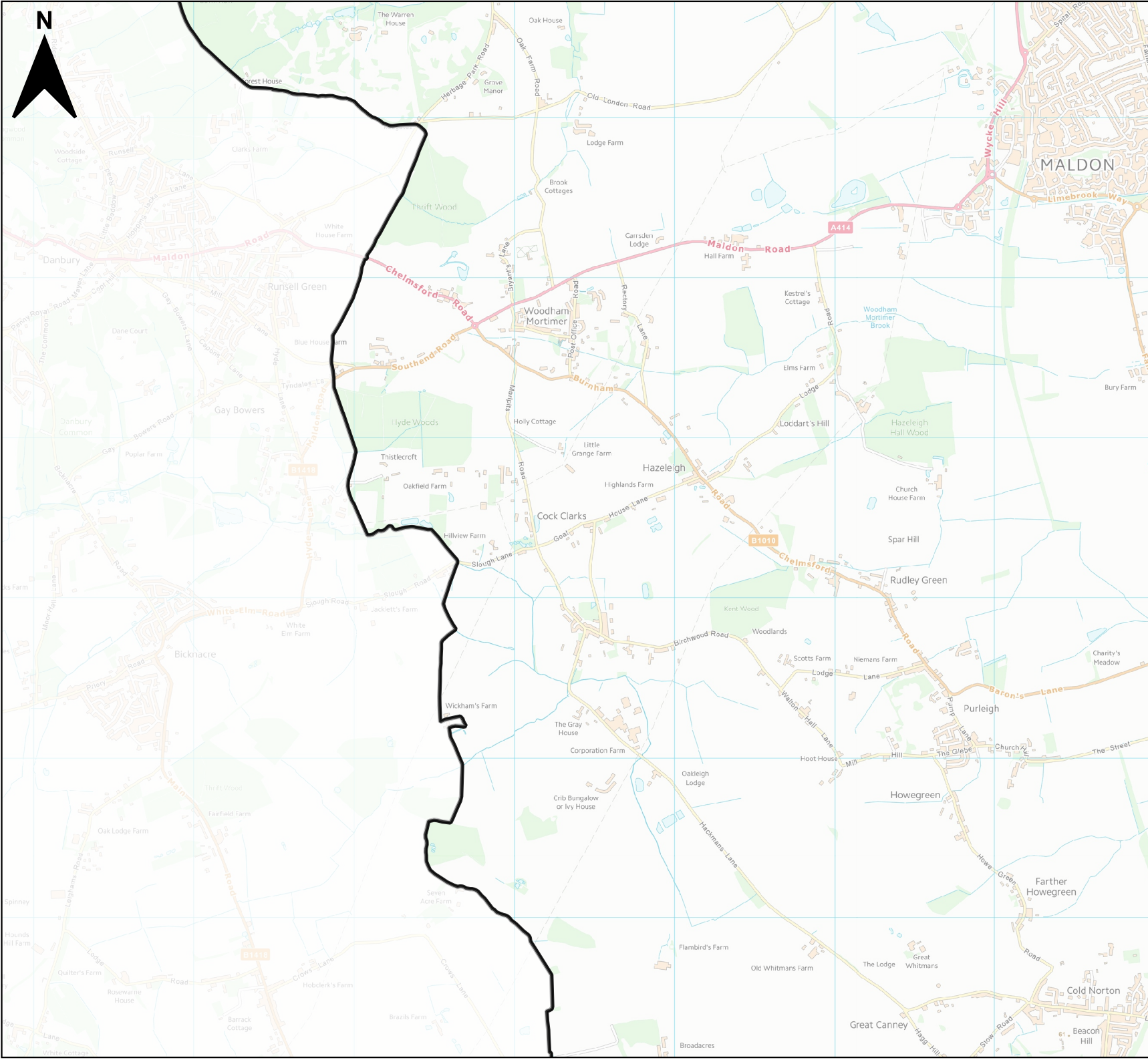
0 500 1,000 m



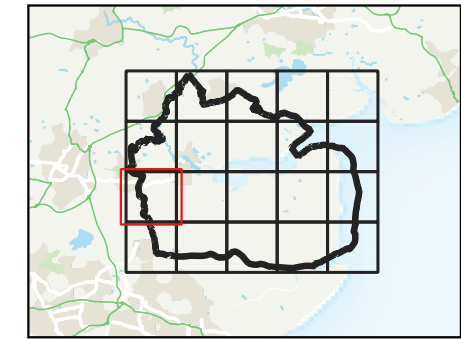
Contains Ordnance Survey data © Crown copyright and database right 2023.
 Contains Environment Agency Information © Environment Agency and database right 2023. All rights reserved.

This document is the property of Jeremy Benn Associates Ltd. It shall not be reproduced in whole or in part, nor disclosed to a third party, without the permission of Jeremy Benn Associates Ltd.






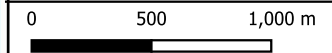


MALDON DISTRICT COUNCIL LEVEL 1 STRATEGIC FLOOD RISK ASSESSMENT



Legend

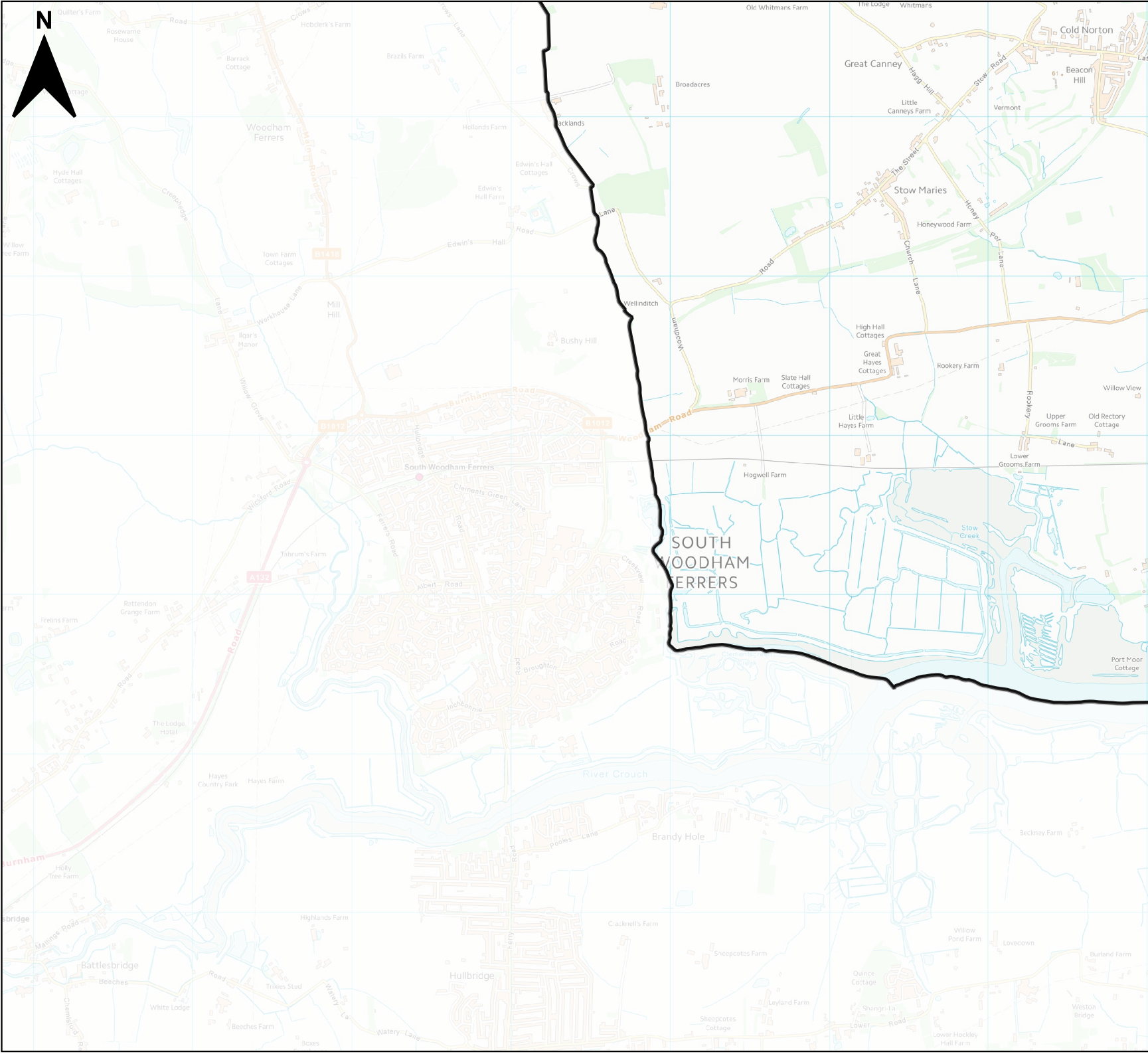
-  Maldon District Boundary
- Reservoir flood extents**
-  Dry day extent
-  Wet day extent



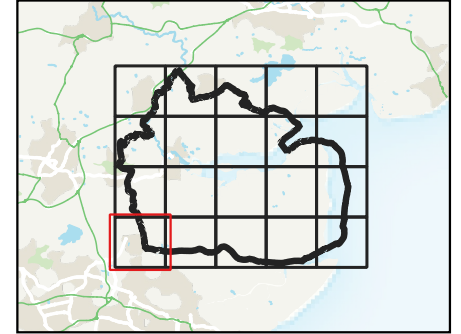
Contains Ordnance Survey data © Crown copyright and database right 2023.
 Contains Environment Agency Information © Environment Agency and database right 2023. All rights reserved.

This document is the property of Jeremy Benn Associates Ltd. It shall not be reproduced in whole or in part, nor disclosed to a third party, without the permission of Jeremy Benn Associates Ltd.






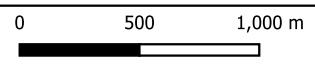


MALDON DISTRICT COUNCIL LEVEL 1 STRATEGIC FLOOD RISK ASSESSMENT



Legend

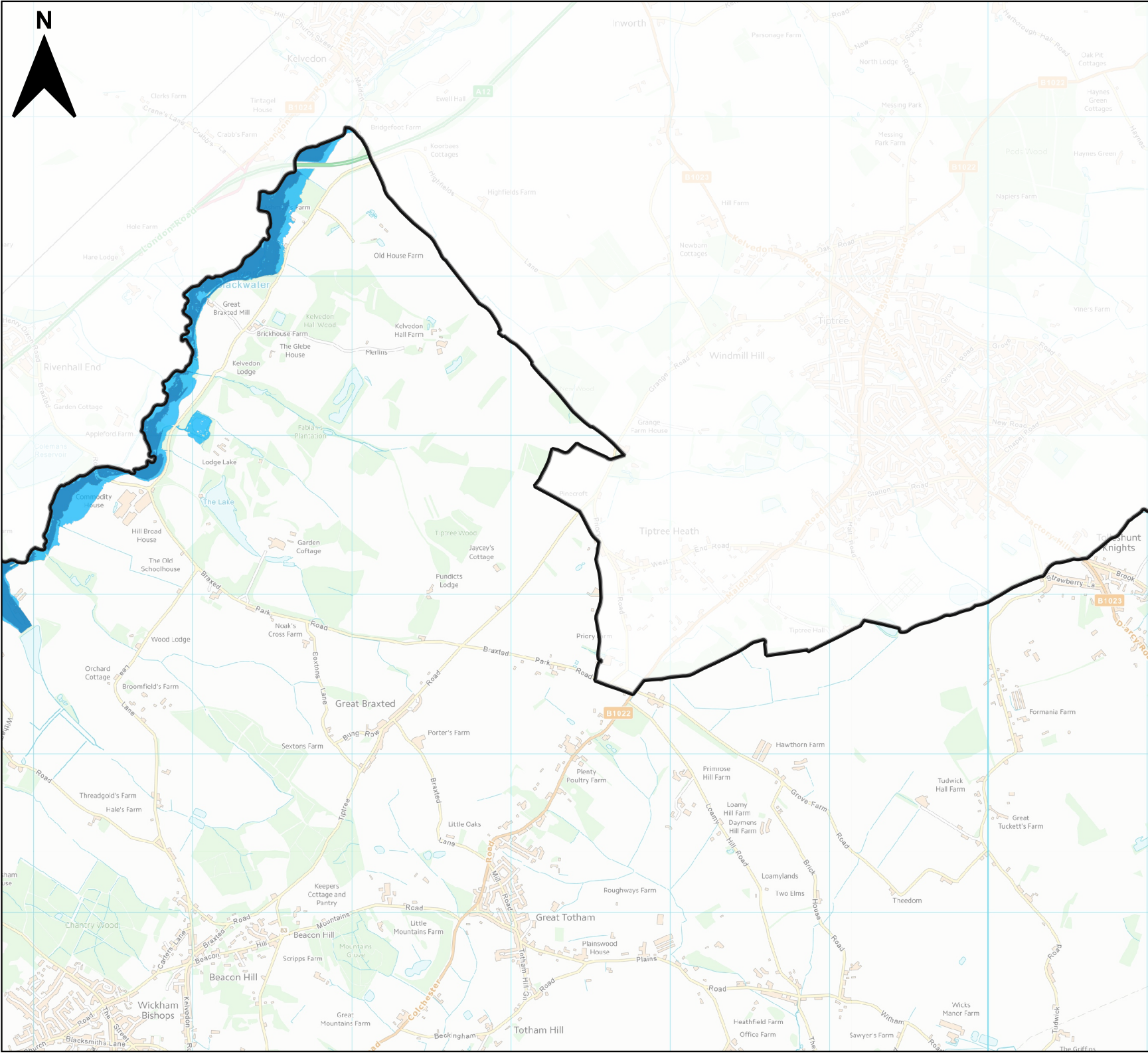
-  Maldon District Boundary
- Reservoir flood extents**
-  Dry day extent
-  Wet day extent



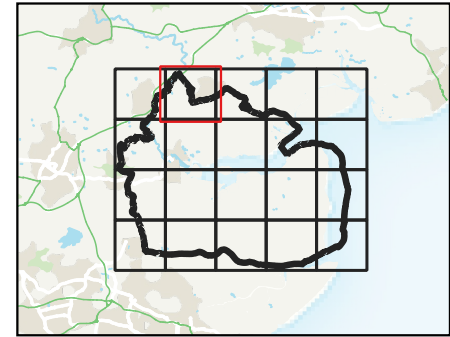
Contains Ordnance Survey data © Crown copyright and database right 2023.
 Contains Environment Agency Information © Environment Agency and database right 2023. All rights reserved.

This document is the property of Jeremy Benn Associates Ltd. It shall not be reproduced in whole or in part, nor disclosed to a third party, without the permission of Jeremy Benn Associates Ltd.






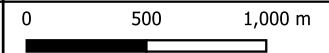


MALDON DISTRICT COUNCIL LEVEL 1 STRATEGIC FLOOD RISK ASSESSMENT



Legend

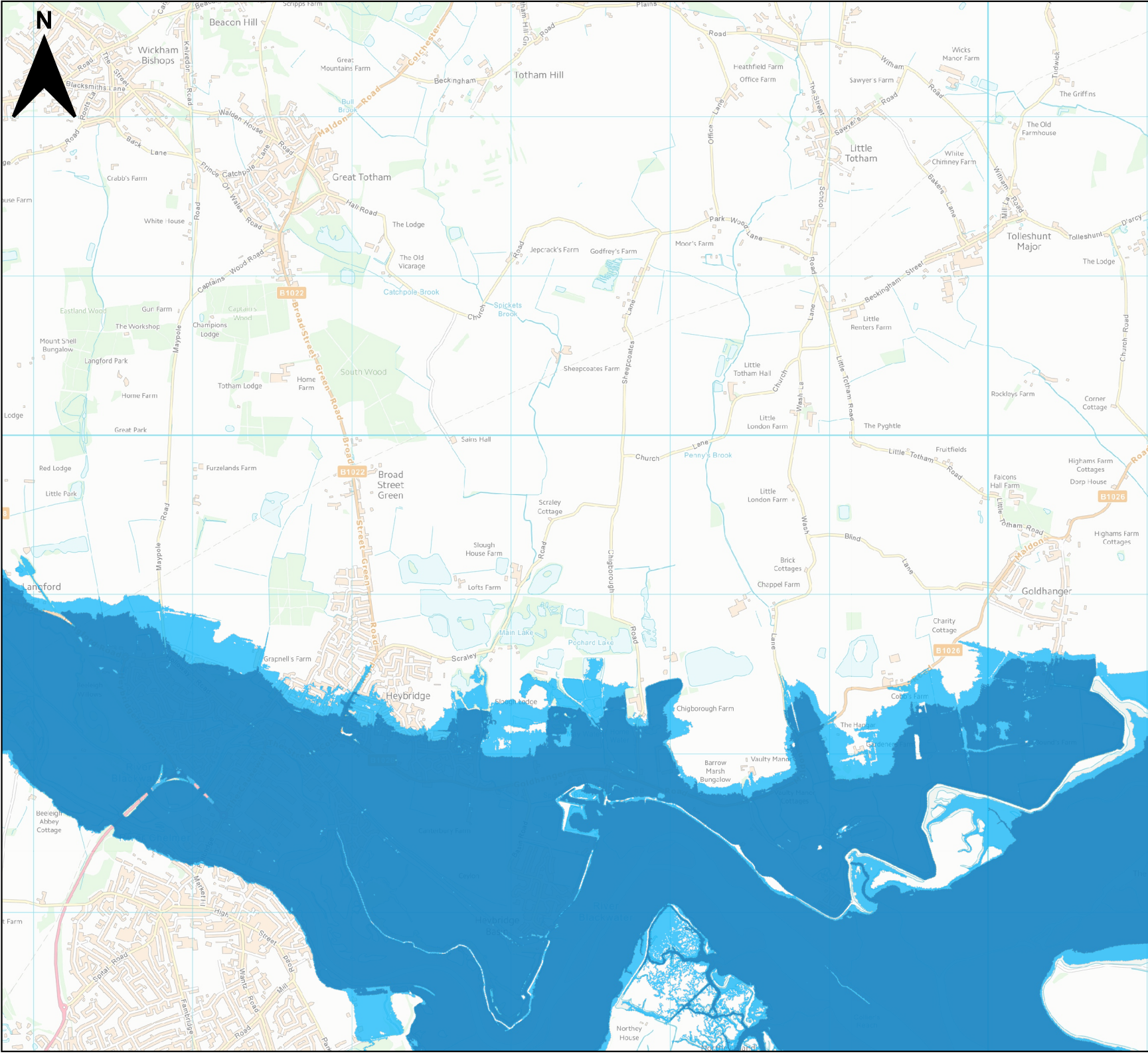
-  Maldon District Boundary
- Reservoir flood extents**
-  Dry day extent
-  Wet day extent



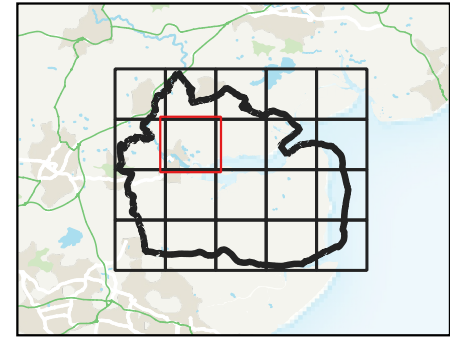
Contains Ordnance Survey data © Crown copyright and database right 2023.
 Contains Environment Agency Information © Environment Agency and database right 2023. All rights reserved.

This document is the property of Jeremy Benn Associates Ltd. It shall not be reproduced in whole or in part, nor disclosed to a third party, without the permission of Jeremy Benn Associates Ltd.






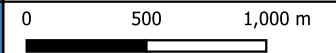


MALDON DISTRICT COUNCIL LEVEL 1 STRATEGIC FLOOD RISK ASSESSMENT



Legend

-  Maldon District Boundary
- Reservoir flood extents**
-  Dry day extent
-  Wet day extent



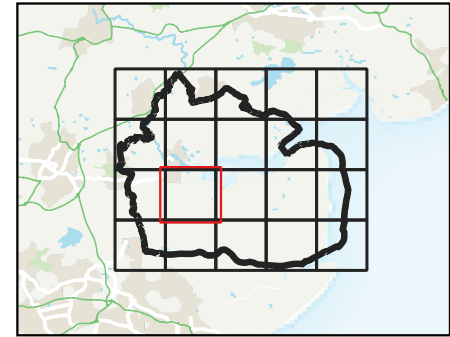
Contains Ordnance Survey data © Crown copyright and database right 2023.
 Contains Environment Agency Information © Environment Agency and database right 2023. All rights reserved.

This document is the property of Jeremy Benn Associates Ltd. It shall not be reproduced in whole or in part, nor disclosed to a third party, without the permission of Jeremy Benn Associates Ltd.






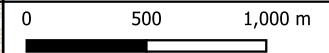


MALDON DISTRICT COUNCIL LEVEL 1 STRATEGIC FLOOD RISK ASSESSMENT



Legend

-  Maldon District Boundary
- Reservoir flood extents**
-  Dry day extent
-  Wet day extent

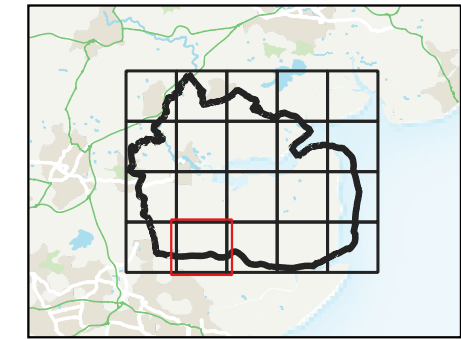
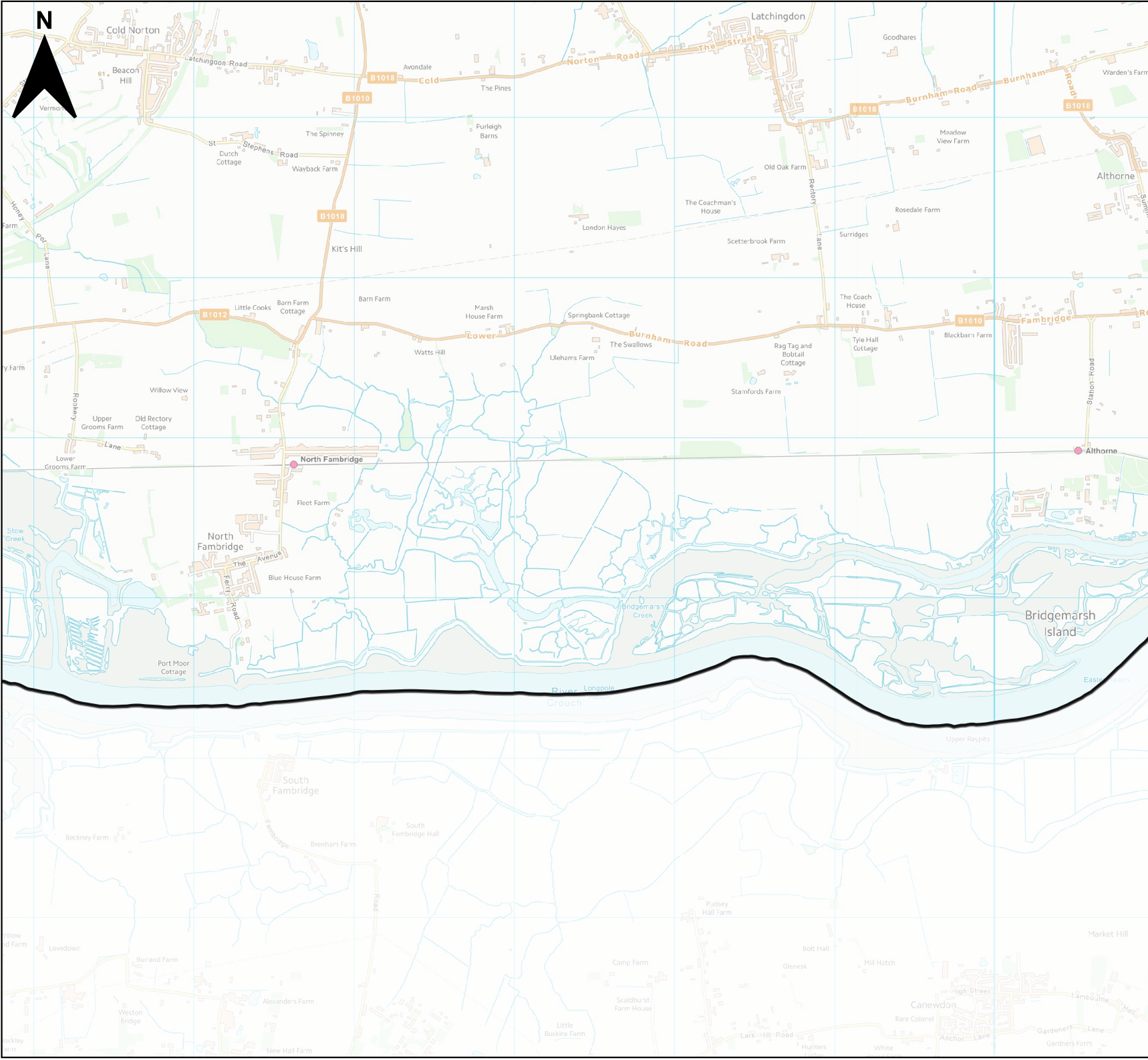


Contains Ordnance Survey data © Crown copyright and database right 2023.
 Contains Environment Agency Information © Environment Agency and database right 2023. All rights reserved.




This document is the property of Jeremy Benn Associates Ltd. It shall not be reproduced in whole or in part, nor disclosed to a third party, without the permission of Jeremy Benn Associates Ltd.

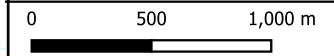


MALDON DISTRICT COUNCIL LEVEL 1 STRATEGIC FLOOD RISK ASSESSMENT



Legend

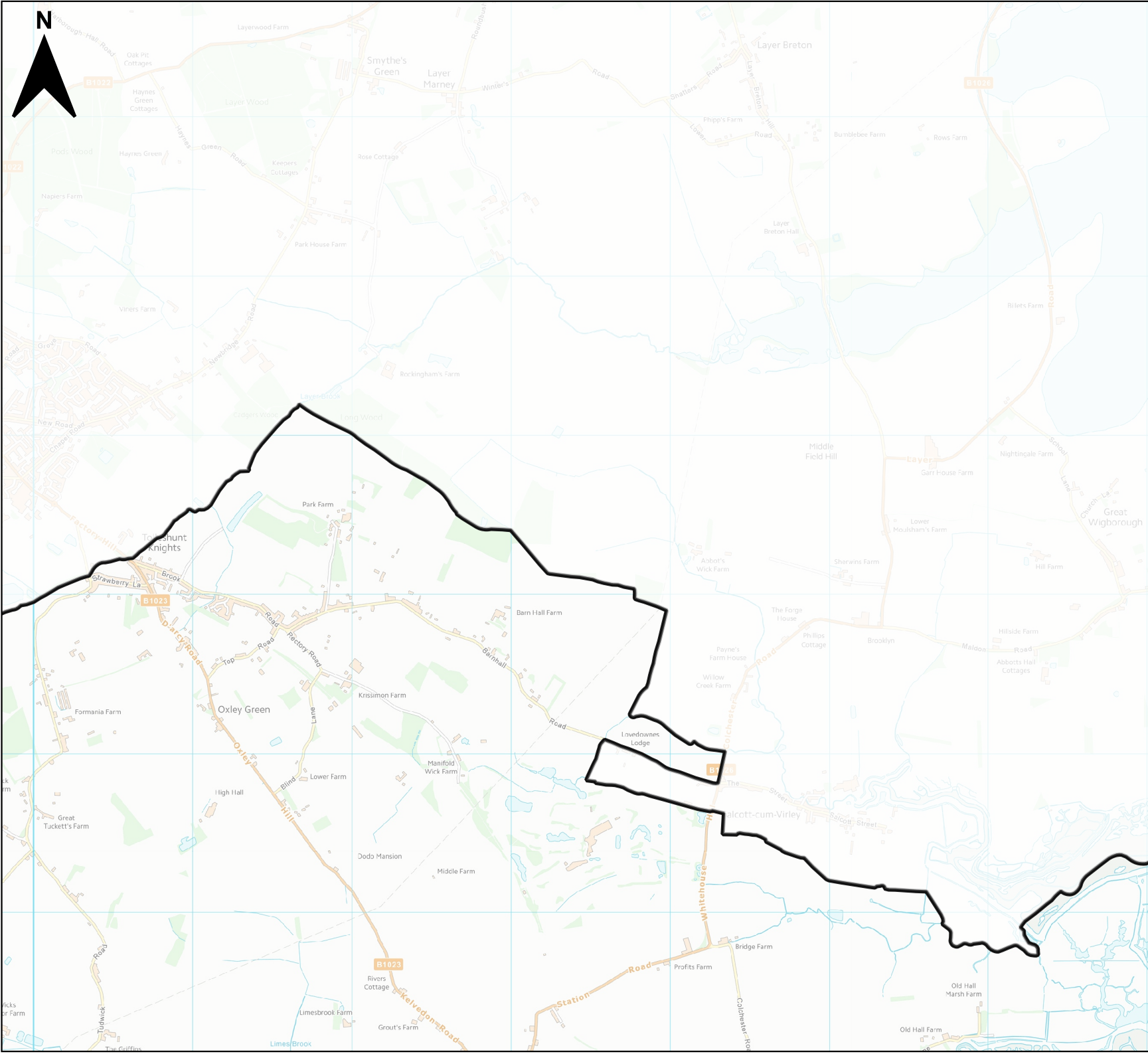
-  Maldon District Boundary
- Reservoir flood extents**
-  Dry day extent
-  Wet day extent



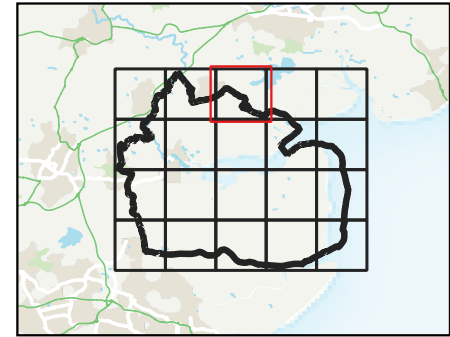
Contains Ordnance Survey data © Crown copyright and database right 2023.
 Contains Environment Agency Information © Environment Agency and database right 2023. All rights reserved.

This document is the property of Jeremy Benn Associates Ltd. It shall not be reproduced in whole or in part, nor disclosed to a third party, without the permission of Jeremy Benn Associates Ltd.






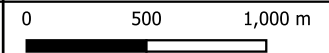


MALDON DISTRICT COUNCIL LEVEL 1 STRATEGIC FLOOD RISK ASSESSMENT



Legend

-  Maldon District Boundary
- Reservoir flood extents**
-  Dry day extent
-  Wet day extent



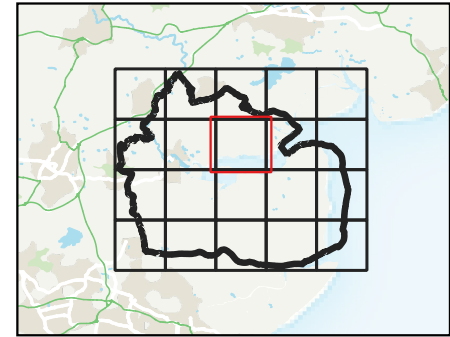
Contains Ordnance Survey data © Crown copyright and database right 2023.
 Contains Environment Agency Information © Environment Agency and database right 2023. All rights reserved.

This document is the property of Jeremy Benn Associates Ltd. It shall not be reproduced in whole or in part, nor disclosed to a third party, without the permission of Jeremy Benn Associates Ltd.






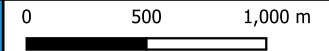


MALDON DISTRICT COUNCIL LEVEL 1 STRATEGIC FLOOD RISK ASSESSMENT



Legend

-  Maldon District Boundary
- Reservoir flood extents**
-  Dry day extent
-  Wet day extent



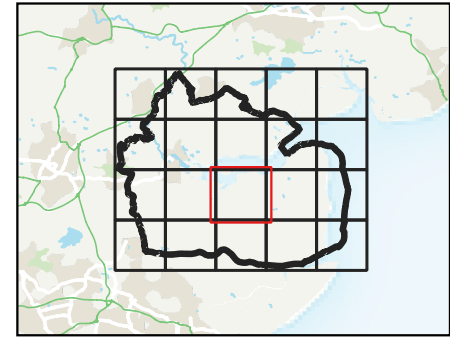
Contains Ordnance Survey data © Crown copyright and database right 2023.
 Contains Environment Agency Information © Environment Agency and database right 2023. All rights reserved.

This document is the property of Jeremy Benn Associates Ltd. It shall not be reproduced in whole or in part, nor disclosed to a third party, without the permission of Jeremy Benn Associates Ltd.






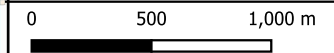


MALDON DISTRICT COUNCIL LEVEL 1 STRATEGIC FLOOD RISK ASSESSMENT



Legend

-  Maldon District Boundary
- Reservoir flood extents**
-  Dry day extent
-  Wet day extent



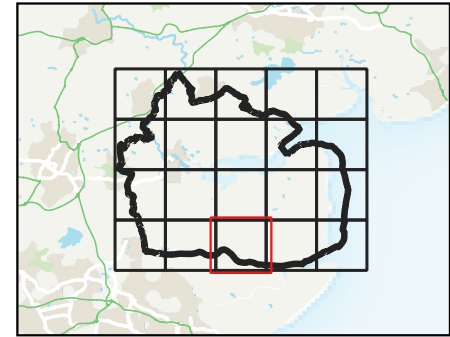
Contains Ordnance Survey data © Crown copyright and database right 2023.
 Contains Environment Agency Information © Environment Agency and database right 2023. All rights reserved.

This document is the property of Jeremy Benn Associates Ltd. It shall not be reproduced in whole or in part, nor disclosed to a third party, without the permission of Jeremy Benn Associates Ltd.






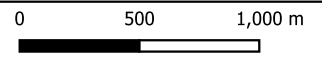


MALDON DISTRICT COUNCIL LEVEL 1 STRATEGIC FLOOD RISK ASSESSMENT



Legend

-  Maldon District Boundary
- Reservoir flood extents**
-  Dry day extent
-  Wet day extent

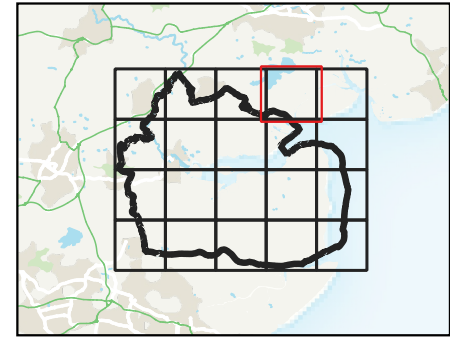


Contains Ordnance Survey data © Crown copyright and database right 2023.
 Contains Environment Agency Information © Environment Agency and database right 2023. All rights reserved.

This document is the property of Jeremy Benn Associates Ltd. It shall not be reproduced in whole or in part, nor disclosed to a third party, without the permission of Jeremy Benn Associates Ltd.




MALDON DISTRICT COUNCIL LEVEL 1 STRATEGIC FLOOD RISK ASSESSMENT




Legend

 Maldon District Boundary

Reservoir flood extents

 Dry day extent

 Wet day extent

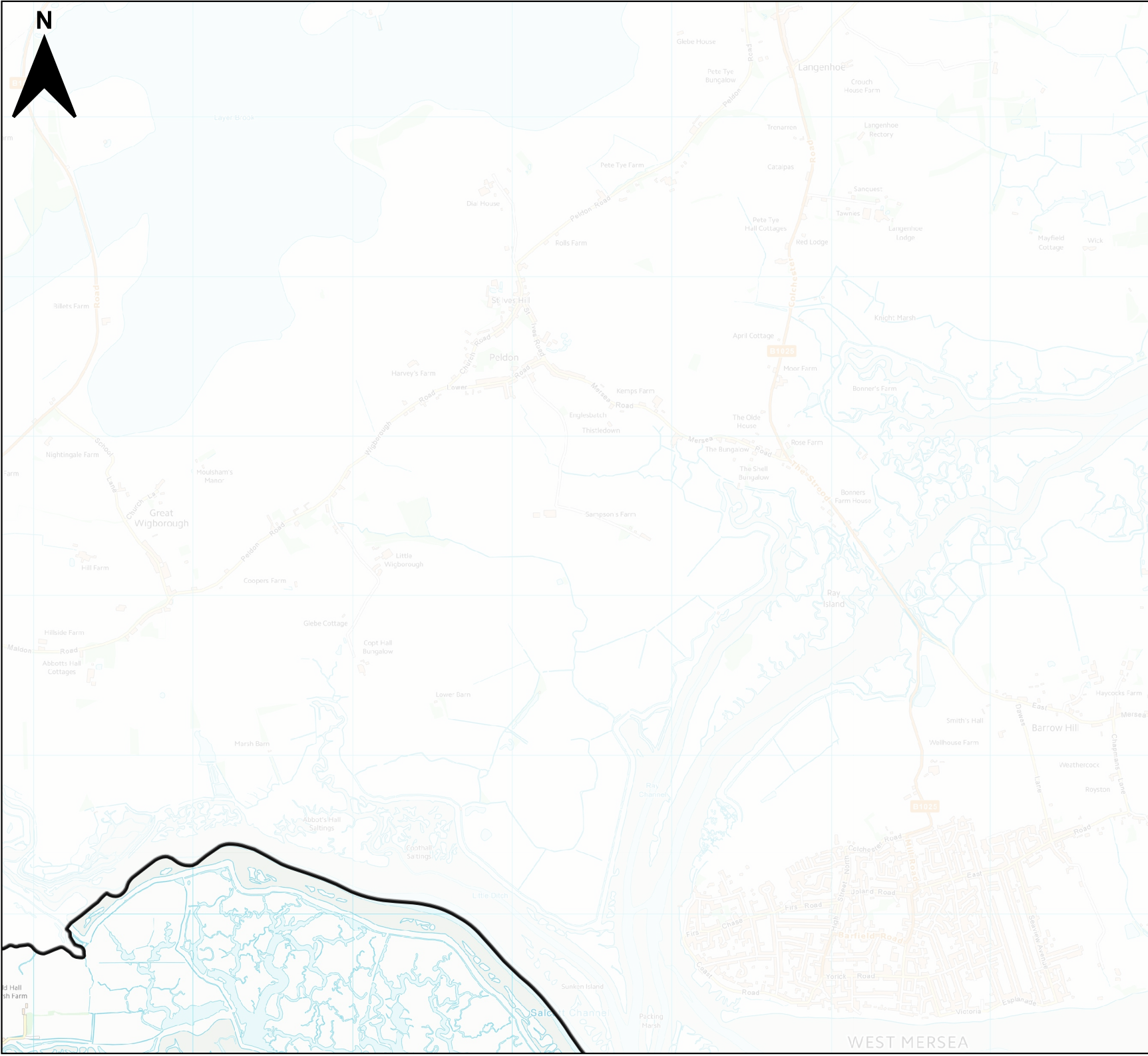
0 500 1,000 m

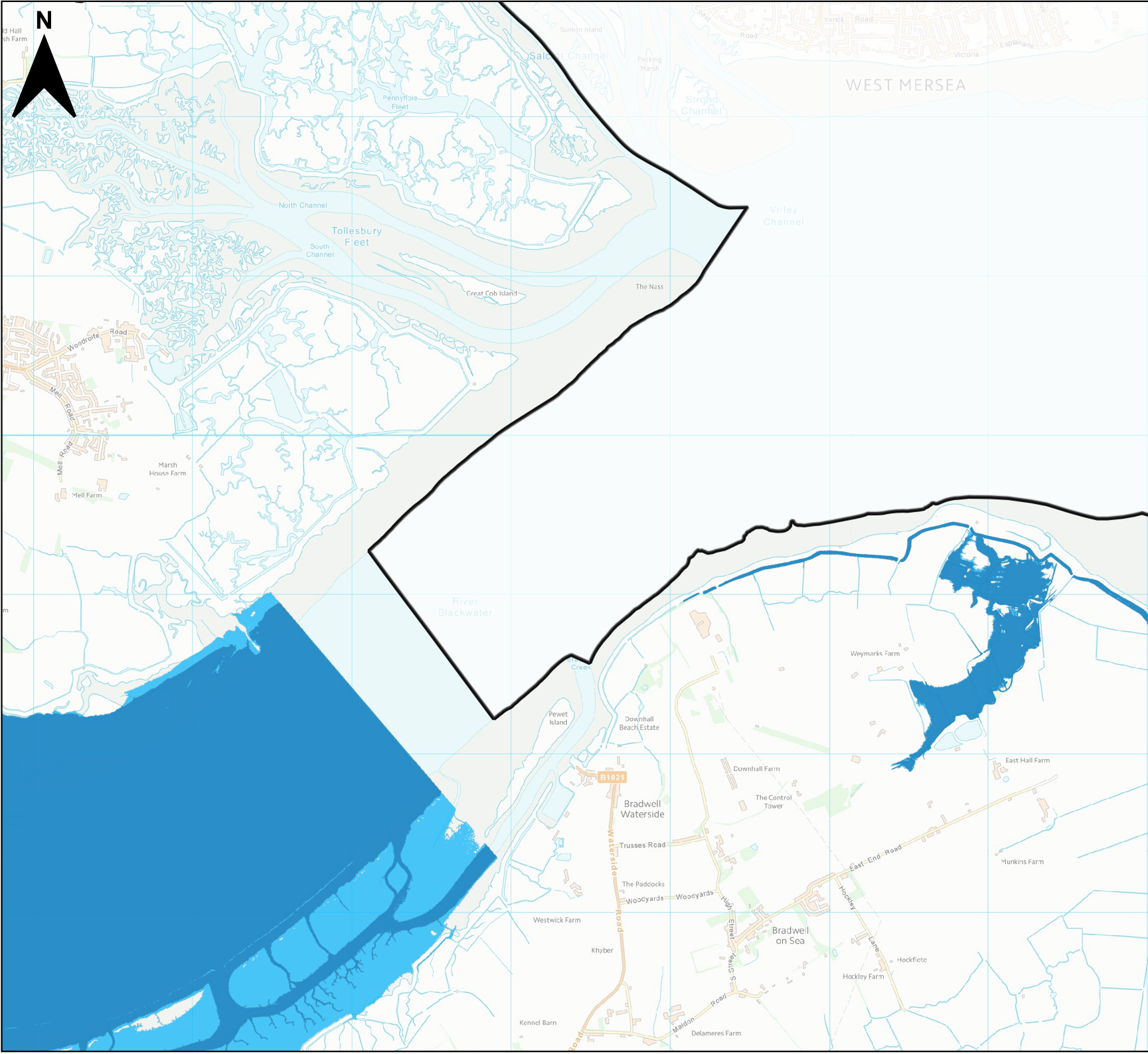


Contains Ordnance Survey data © Crown copyright and database right 2023.
Contains Environment Agency Information © Environment Agency and database right 2023. All rights reserved.

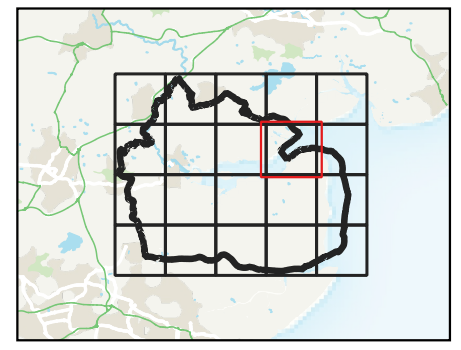
This document is the property of Jeremy Benn Associates Ltd. It shall not be reproduced in whole or in part, nor disclosed to a third party, without the permission of Jeremy Benn Associates Ltd.

JBA
consulting







MALDON DISTRICT COUNCIL LEVEL 1 STRATEGIC FLOOD RISK ASSESSMENT




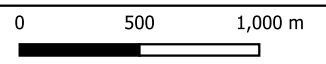
Legend

 Maldon District Boundary

Reservoir flood extents

 Dry day extent

 Wet day extent



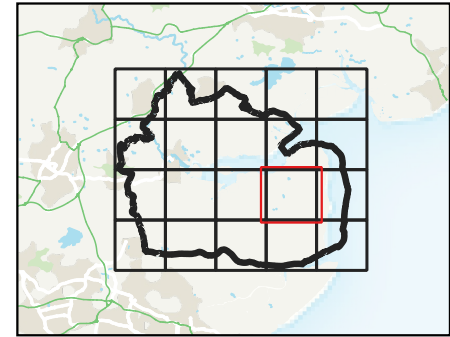
Contains Ordnance Survey data © Crown copyright and database right 2023.
 Contains Environment Agency Information © Environment Agency and database right 2023. All rights reserved.

This document is the property of Jeremy Benn Associates Ltd. It shall not be reproduced in whole or in part, nor disclosed to a third party, without the permission of Jeremy Benn Associates Ltd.






MALDON DISTRICT COUNCIL LEVEL 1 STRATEGIC FLOOD RISK ASSESSMENT




Legend

 Maldon District Boundary

Reservoir flood extents

 Dry day extent

 Wet day extent

0 500 1,000 m

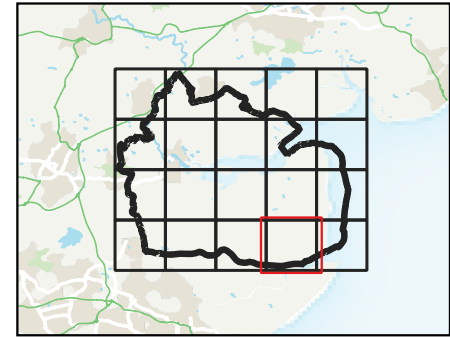
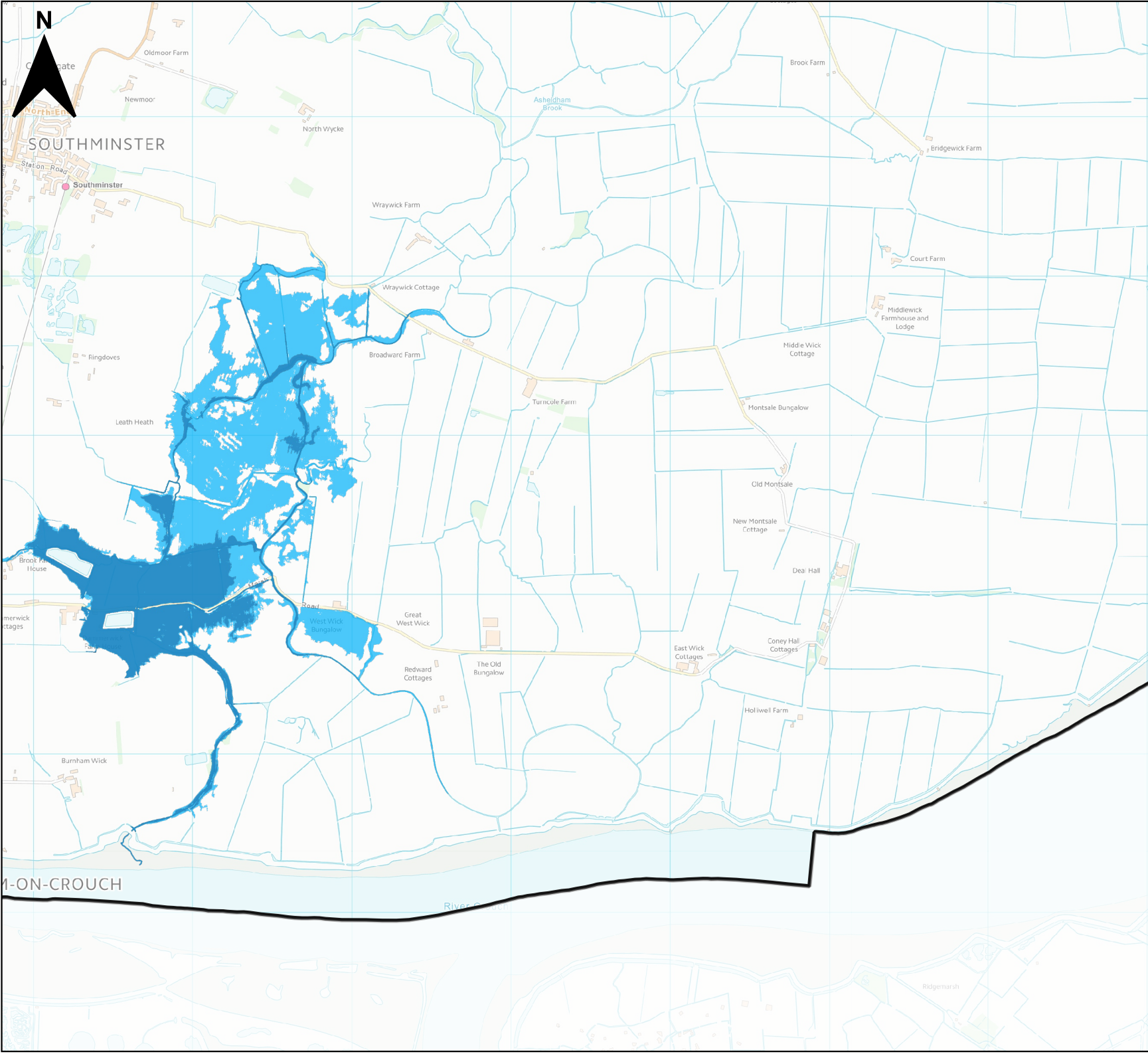


Contains Ordnance Survey data © Crown copyright and database right 2023.
 Contains Environment Agency Information © Environment Agency and database right 2023. All rights reserved.

This document is the property of Jeremy Benn Associates Ltd. It shall not be reproduced in whole or in part, nor disclosed to a third party, without the permission of Jeremy Benn Associates Ltd.




MALDON DISTRICT COUNCIL LEVEL 1 STRATEGIC FLOOD RISK ASSESSMENT




Legend

 Maldon District Boundary

Reservoir flood extents

 Dry day extent

 Wet day extent

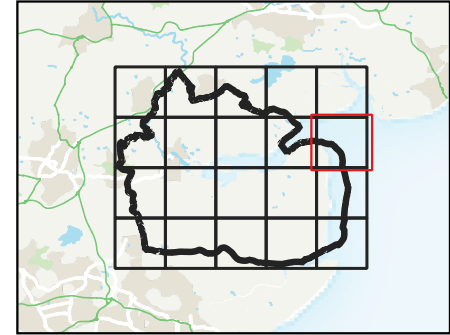
0 500 1,000 m




Contains Ordnance Survey data © Crown copyright and database right 2023.
Contains Environment Agency Information © Environment Agency and database right 2023. All rights reserved.

This document is the property of Jeremy Benn Associates Ltd. It shall not be reproduced in whole or in part, nor disclosed to a third party, without the permission of Jeremy Benn Associates Ltd.


MALDON DISTRICT COUNCIL LEVEL 1 STRATEGIC FLOOD RISK ASSESSMENT




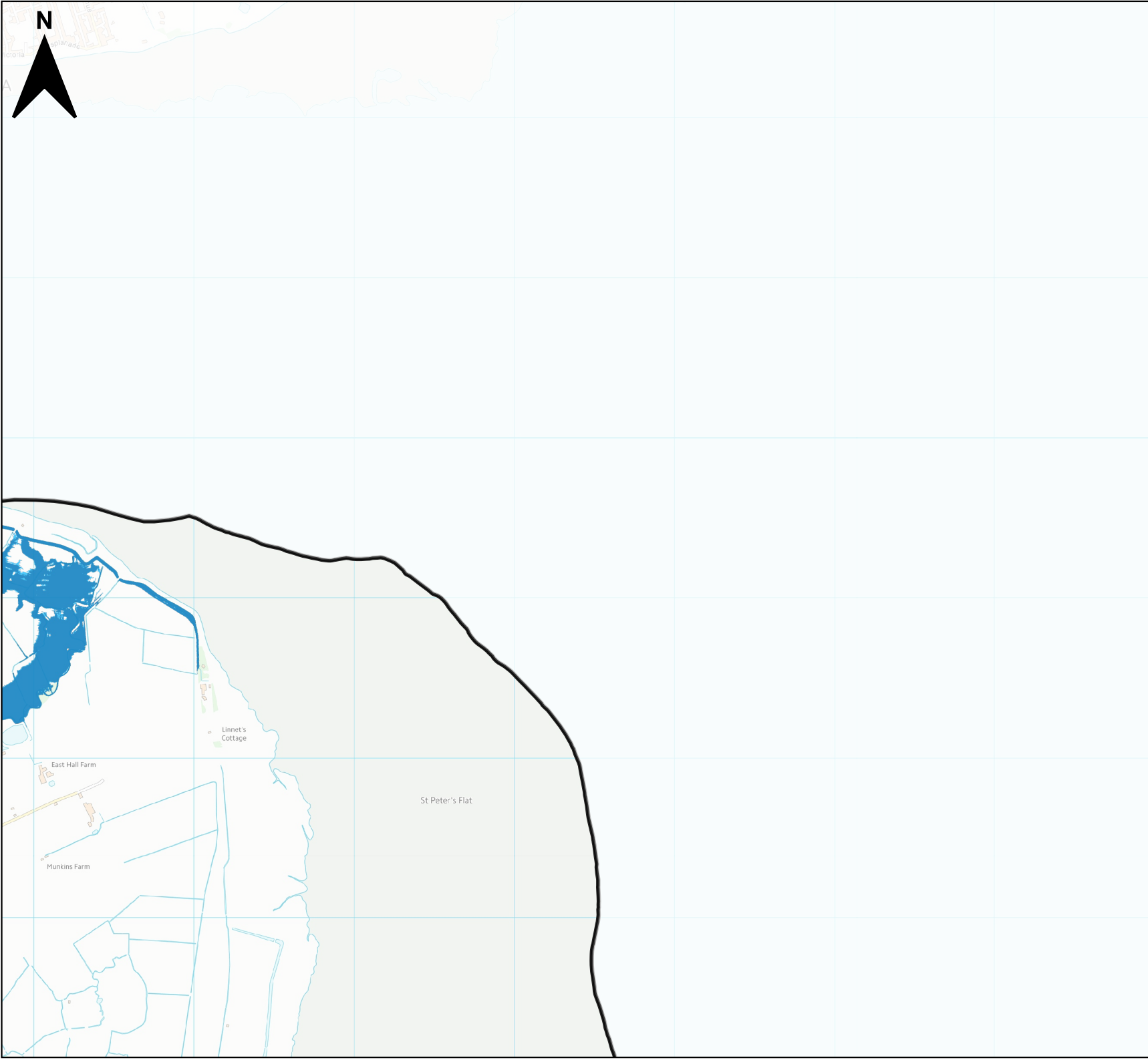
Legend

 Maldon District Boundary

Reservoir flood extents

 Dry day extent

 Wet day extent



0 500 1,000 m

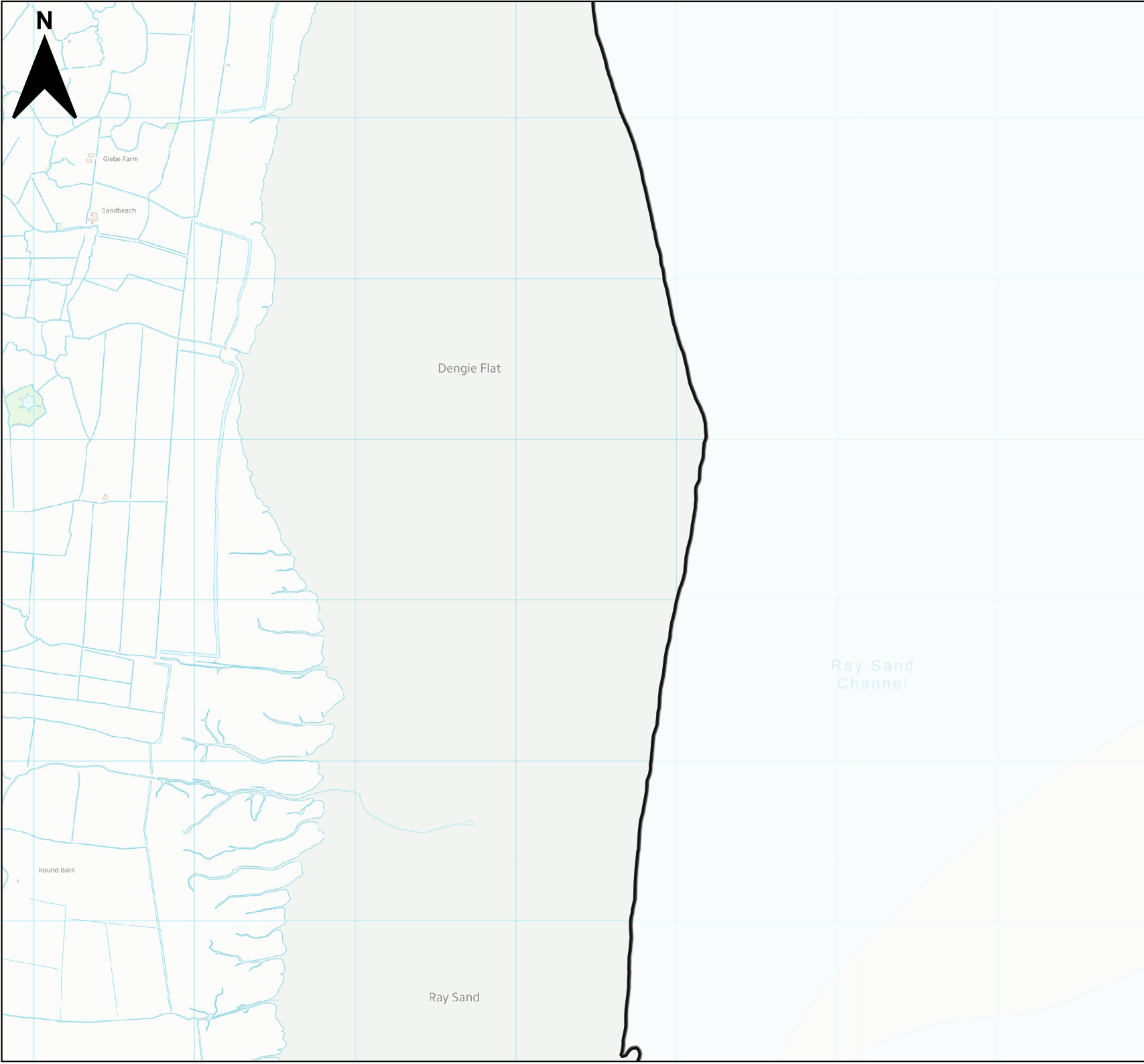
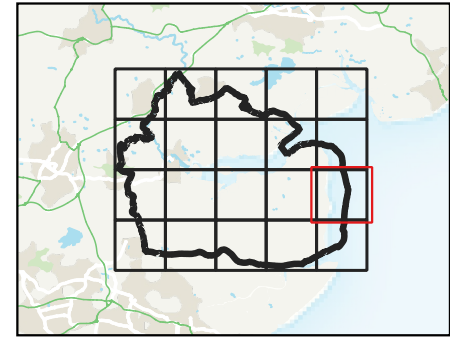


Contains Ordnance Survey data © Crown copyright and database right 2023.
Contains Environment Agency Information © Environment Agency and database right 2023. All rights reserved.

This document is the property of Jeremy Benn Associates Ltd. It shall not be reproduced in whole or in part, nor disclosed to a third party, without the permission of Jeremy Benn Associates Ltd.




MALDON DISTRICT COUNCIL LEVEL 1 STRATEGIC FLOOD RISK ASSESSMENT




Legend

 Maldon District Boundary

Reservoir flood extents

 Dry day extent

 Wet day extent

0 500 1,000 m



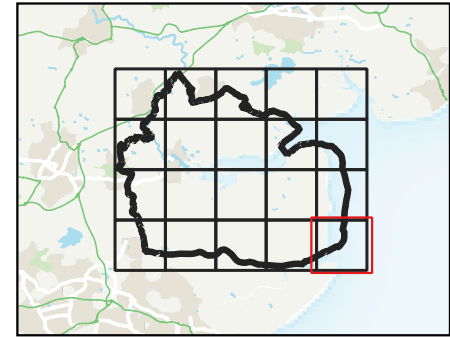
Contains Ordnance Survey data © Crown copyright and database right 2023.
Contains Environment Agency Information © Environment Agency and database right 2023. All rights reserved.

This document is the property of Jeremy Benn Associates Ltd. It shall not be reproduced in whole or in part, nor disclosed to a third party, without the permission of Jeremy Benn Associates Ltd.

JBA
consulting




MALDON DISTRICT COUNCIL LEVEL 1 STRATEGIC FLOOD RISK ASSESSMENT




Legend

 Maldon District Boundary

Reservoir flood extents

 Dry day extent

 Wet day extent

0 500 1,000 m



Contains Ordnance Survey data © Crown copyright and database right 2023.
Contains Environment Agency Information © Environment Agency and database right 2023. All rights reserved.

This document is the property of Jeremy Benn Associates Ltd. It shall not be reproduced in whole or in part, nor disclosed to a third party, without the permission of Jeremy Benn Associates Ltd.

