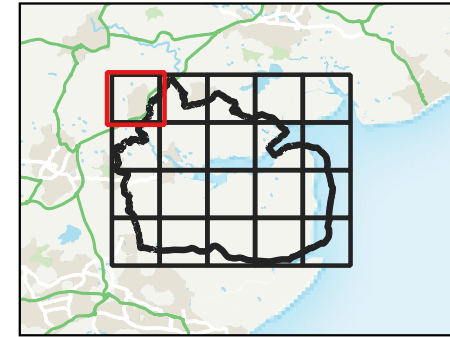





**MALDON DISTRICT COUNCIL LEVEL 1
STRATEGIC FLOOD RISK ASSESSMENT**

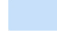


Legend

 Maldon District Boundary

**2070s Climate change uplifted
Risk of Flooding from Surface
Water - extent**

 3.3% AEP +35% Climate Change

 1% AEP +45% Climate Change

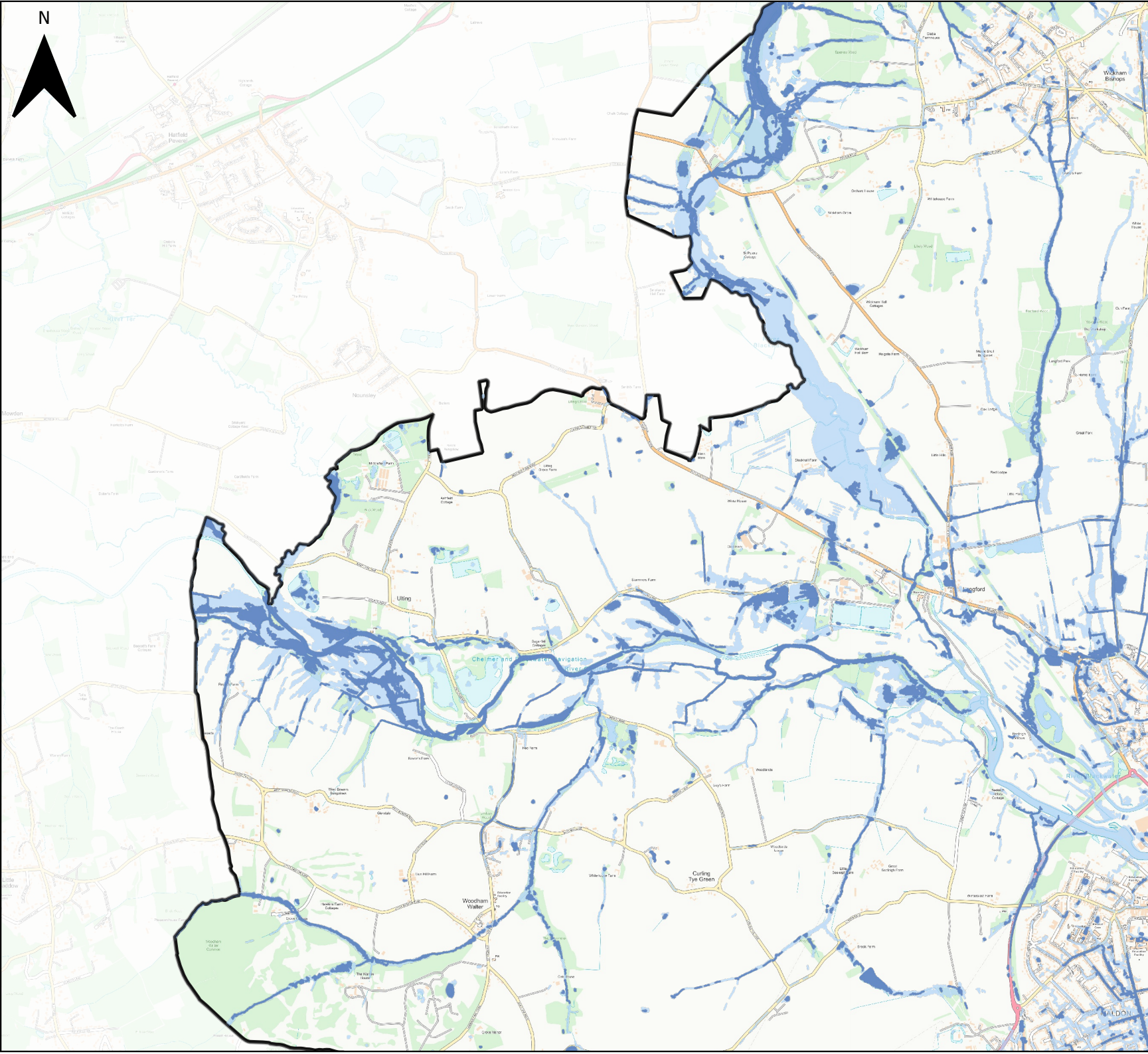
0 0.5 1 km



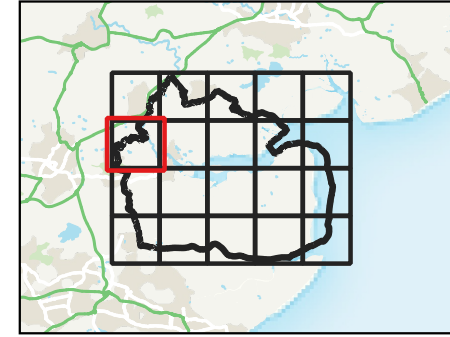
Contains Ordnance Survey data © Crown copyright and database right 2023.
Contains Environment Agency Information © Environment Agency and database right 2023. All rights reserved.

This document is the property of Jeremy Benn Associates Ltd. It shall not be reproduced in whole or in part, nor disclosed to a third party, without the permission of Jeremy Benn Associates Ltd.






MALDON DISTRICT COUNCIL LEVEL 1 STRATEGIC FLOOD RISK ASSESSMENT




Legend

 Maldon District Boundary

2070s Climate change uplifted Risk of Flooding from Surface Water - extent

 3.3% AEP +35% Climate Change

 1% AEP +45% Climate Change

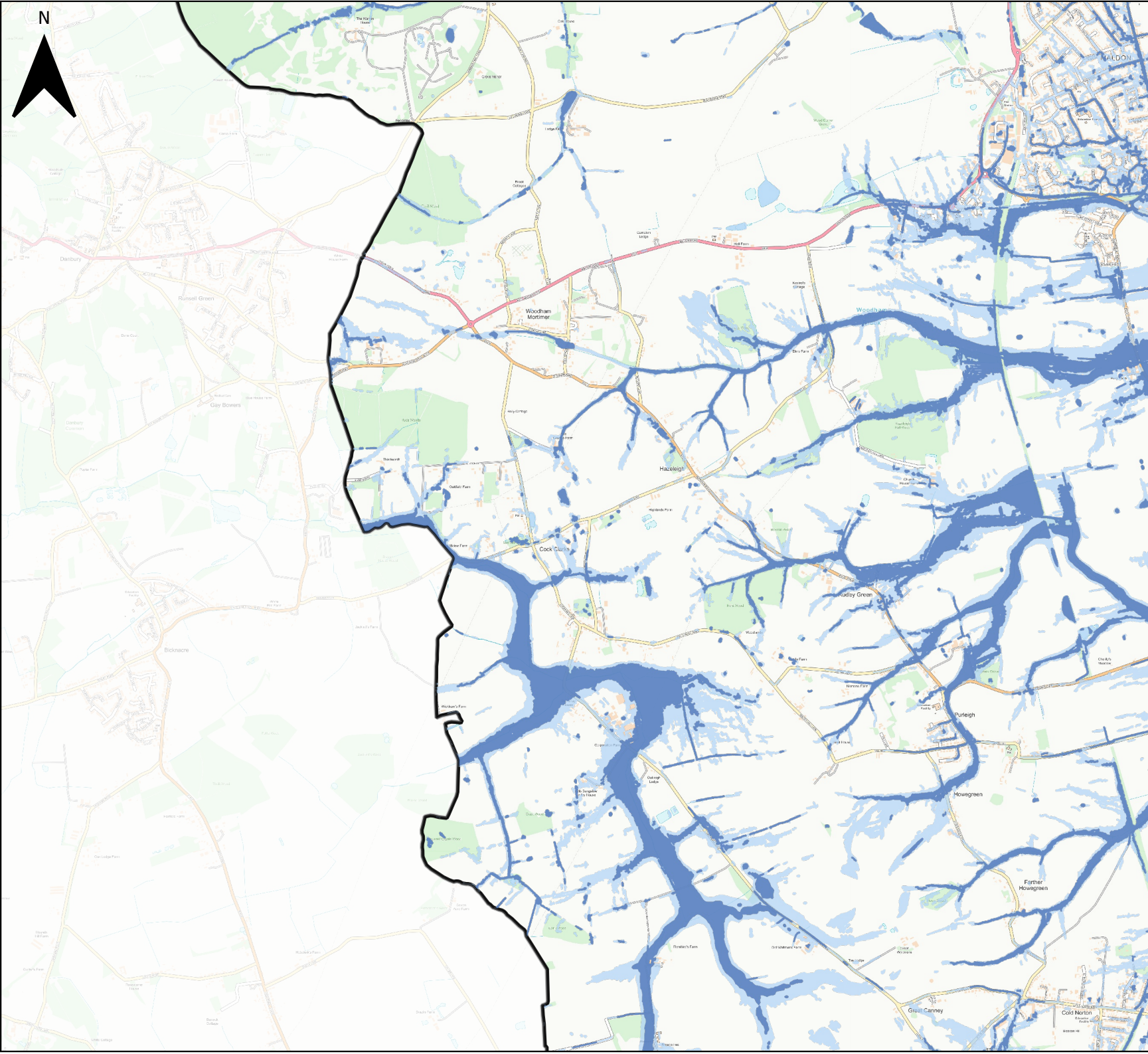
0 0.5 1 km



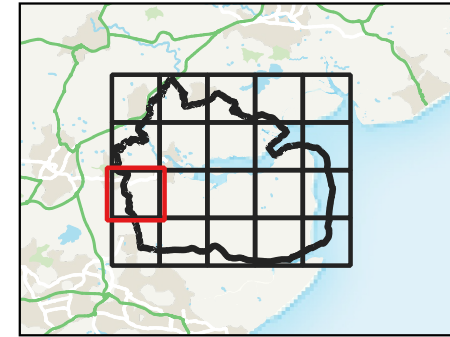
Contains Ordnance Survey data © Crown copyright and database right 2023.
 Contains Environment Agency Information © Environment Agency and database right 2023. All rights reserved.

This document is the property of Jeremy Benn Associates Ltd. It shall not be reproduced in whole or in part, nor disclosed to a third party, without the permission of Jeremy Benn Associates Ltd.






MALDON DISTRICT COUNCIL LEVEL 1 STRATEGIC FLOOD RISK ASSESSMENT




Legend

 Maldon District Boundary

2070s Climate change uplifted Risk of Flooding from Surface Water - extent

 3.3% AEP +35% Climate Change

 1% AEP +45% Climate Change

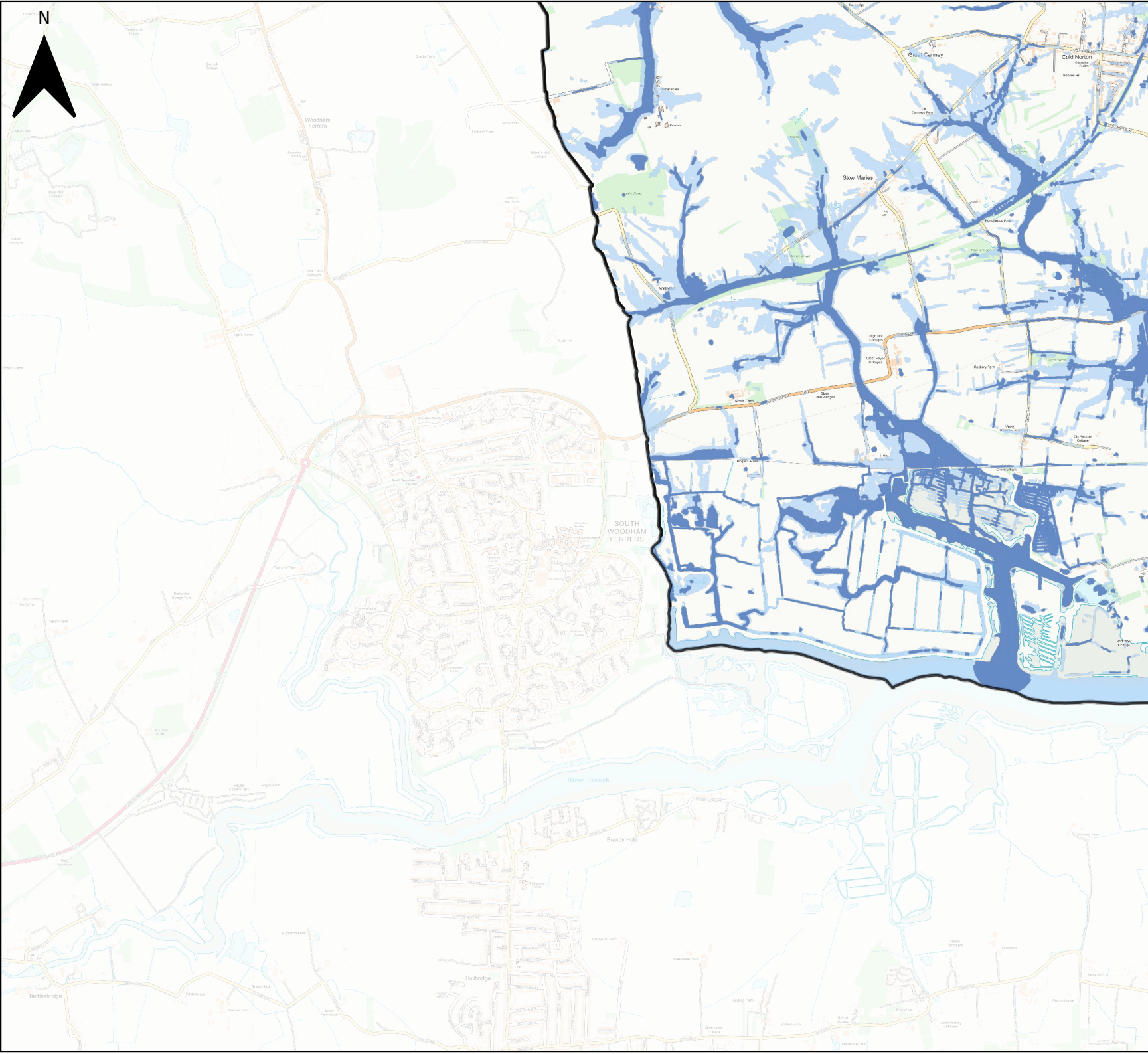
0 0.5 1 km



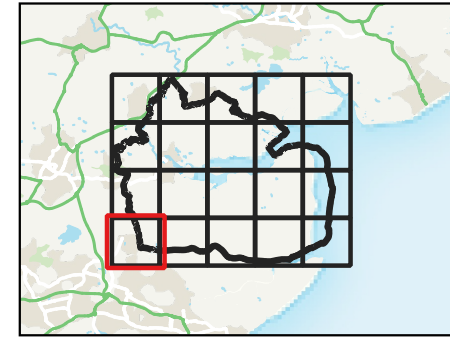
Contains Ordnance Survey data © Crown copyright and database right 2023.
 Contains Environment Agency Information © Environment Agency and database right 2023. All rights reserved.

This document is the property of Jeremy Benn Associates Ltd. It shall not be reproduced in whole or in part, nor disclosed to a third party, without the permission of Jeremy Benn Associates Ltd.






**MALDON DISTRICT COUNCIL LEVEL 1
STRATEGIC FLOOD RISK ASSESSMENT**




Legend

 Maldon District Boundary

**2070s Climate change uplifted
Risk of Flooding from Surface
Water - extent**

 3.3% AEP +35% Climate Change

 1% AEP +45% Climate Change

0 0.5 1 km

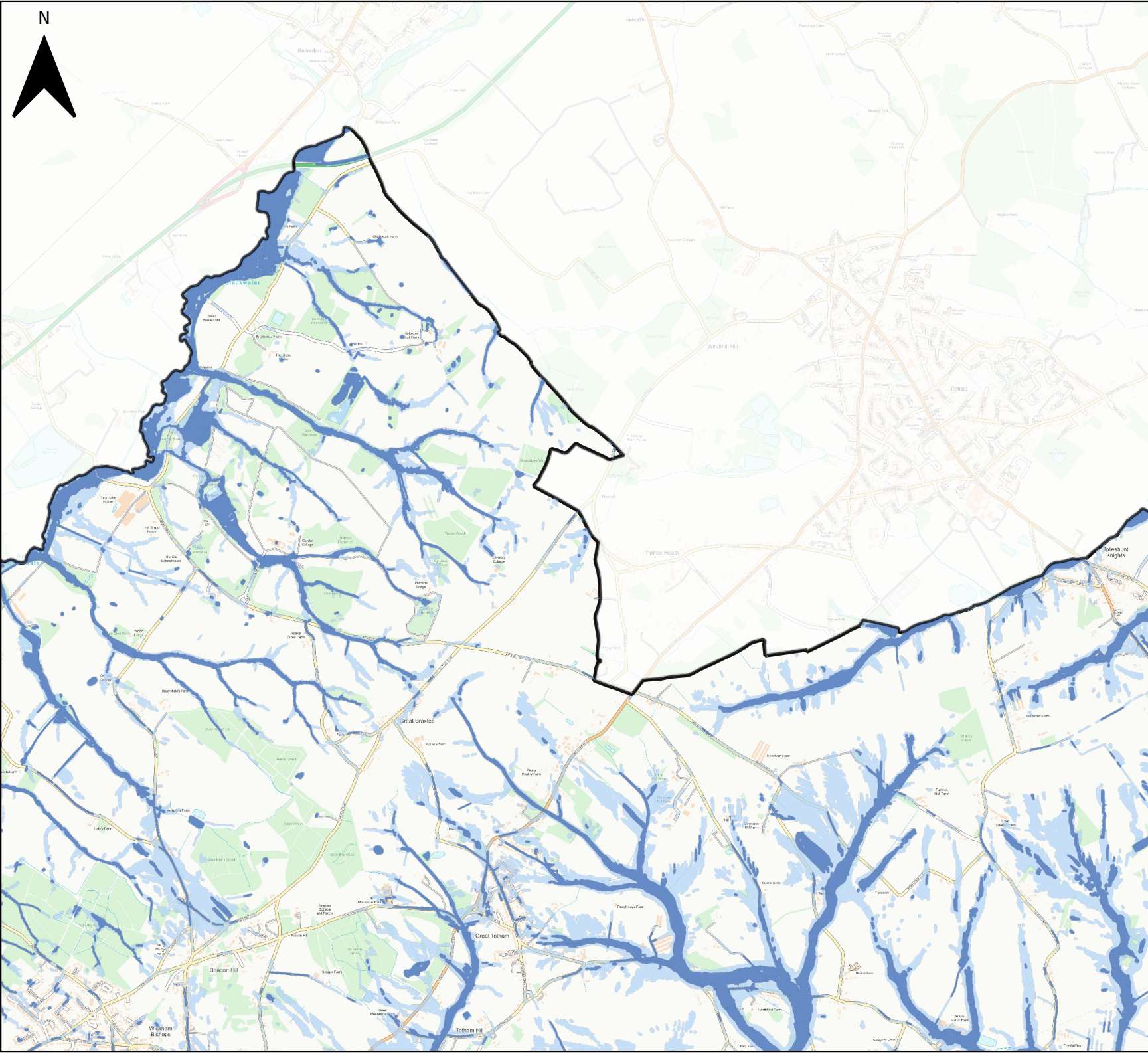
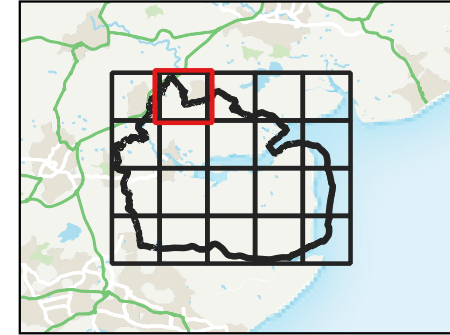


Contains Ordnance Survey data © Crown copyright and database right 2023.
Contains Environment Agency Information © Environment Agency and database right 2023. All rights reserved.

This document is the property of Jeremy Benn Associates Ltd. It shall not be reproduced in whole or in part, nor disclosed to a third party, without the permission of Jeremy Benn Associates Ltd.




MALDON DISTRICT COUNCIL LEVEL 1 STRATEGIC FLOOD RISK ASSESSMENT




Legend

 Maldon District Boundary

2070s Climate change uplifted Risk of Flooding from Surface Water - extent

 3.3% AEP +35% Climate Change

 1% AEP +45% Climate Change

0 0.5 1 km

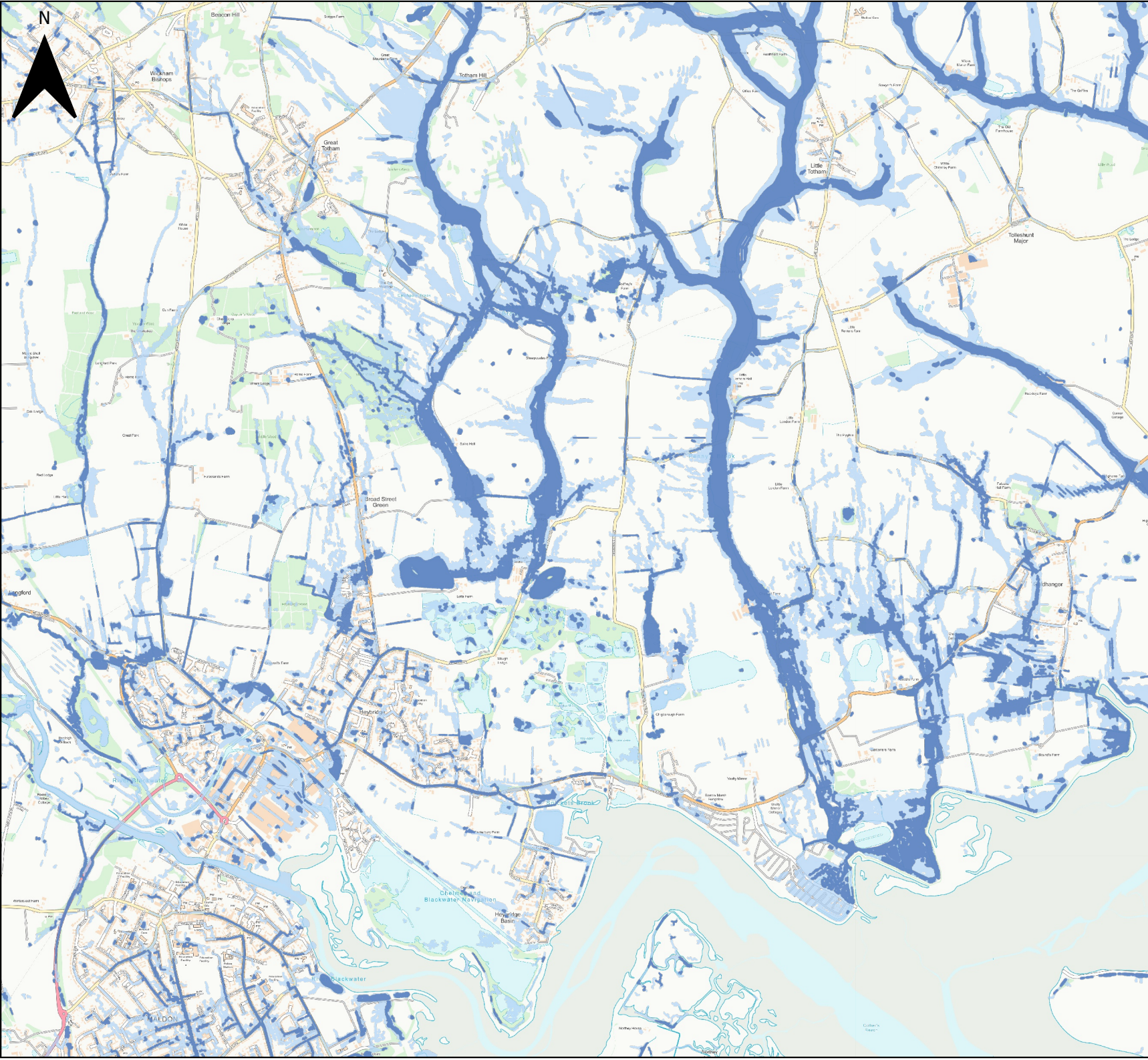
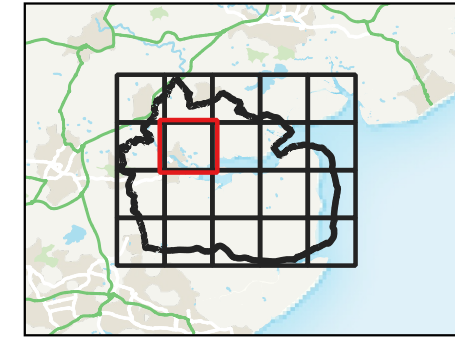


Contains Ordnance Survey data © Crown copyright and database right 2023.
Contains Environment Agency Information © Environment Agency and database right 2023. All rights reserved.

This document is the property of Jeremy Benn Associates Ltd. It shall not be reproduced in whole or in part, nor disclosed to a third party, without the permission of Jeremy Benn Associates Ltd.




MALDON DISTRICT COUNCIL LEVEL 1 STRATEGIC FLOOD RISK ASSESSMENT




Legend

 Maldon District Boundary

2070s Climate change uplifted Risk of Flooding from Surface Water - extent

 3.3% AEP +35% Climate Change

 1% AEP +45% Climate Change

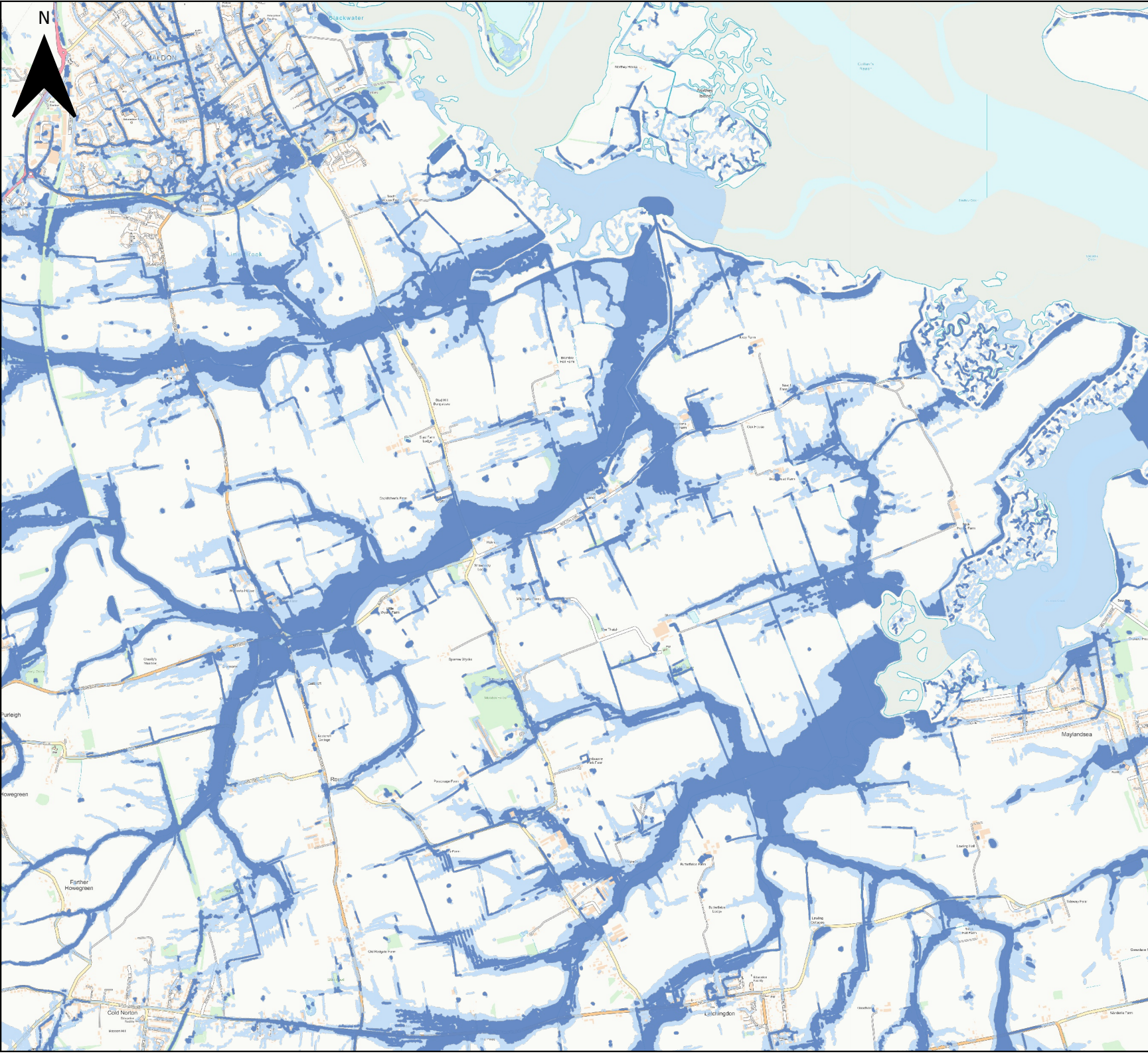
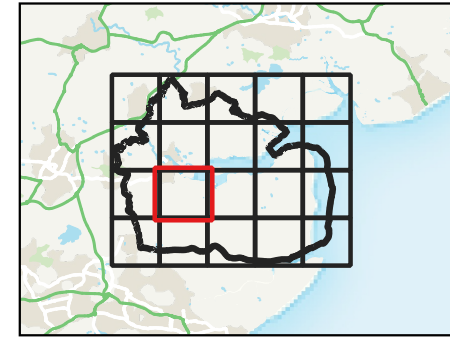
0 0.5 1 km



Contains Ordnance Survey data © Crown copyright and database right 2023.
Contains Environment Agency Information © Environment Agency and database right 2023. All rights reserved.

This document is the property of Jeremy Benn Associates Ltd. It shall not be reproduced in whole or in part, nor disclosed to a third party, without the permission of Jeremy Benn Associates Ltd.


MALDON DISTRICT COUNCIL LEVEL 1 STRATEGIC FLOOD RISK ASSESSMENT




Legend

 Maldon District Boundary

2070s Climate change uplifted Risk of Flooding from Surface Water - extent

 3.3% AEP +35% Climate Change

 1% AEP +45% Climate Change

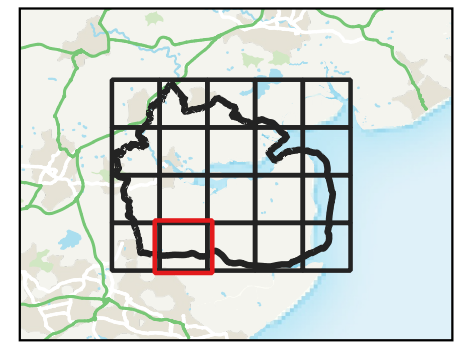
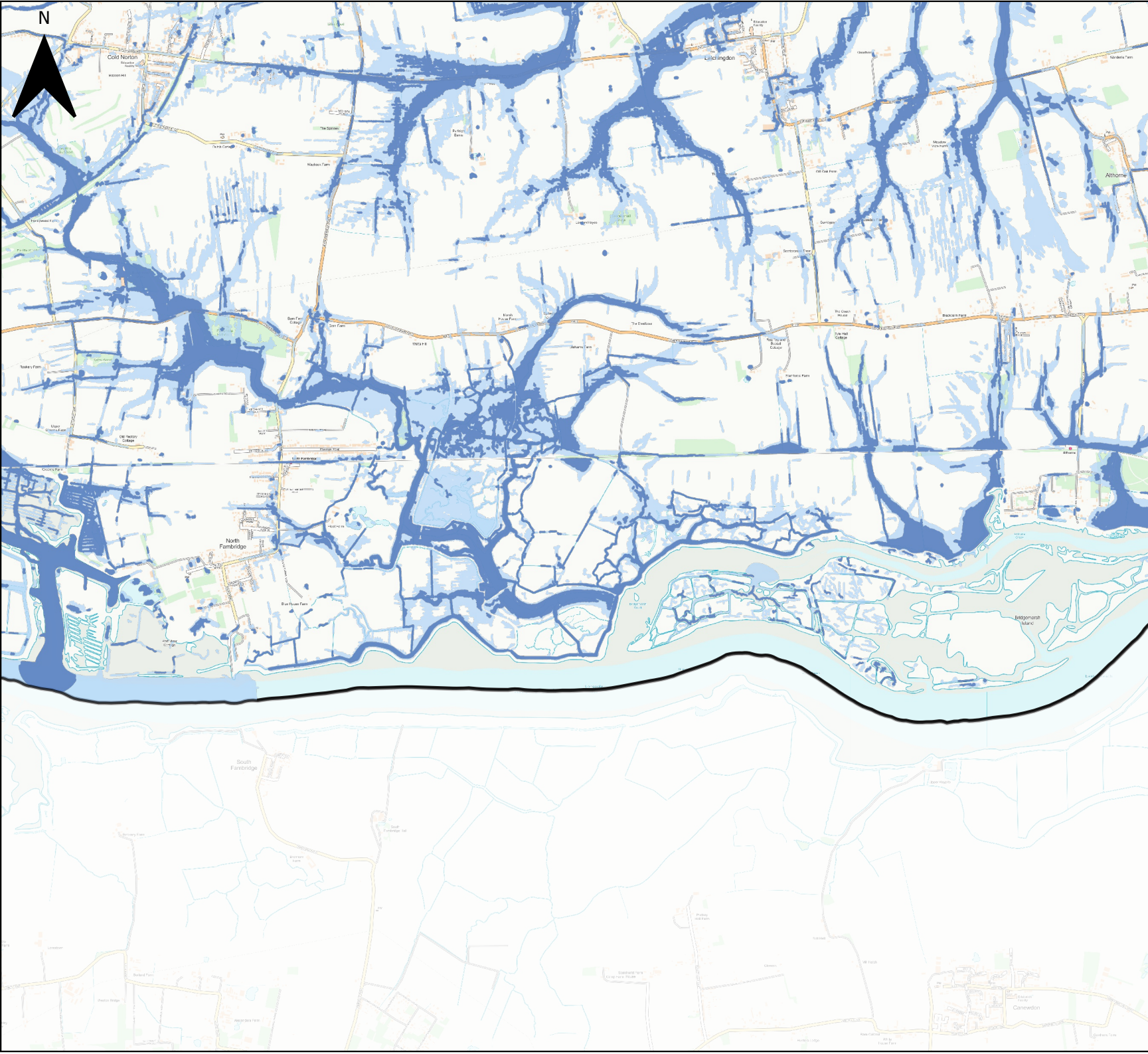
0 0.5 1 km



Contains Ordnance Survey data © Crown copyright and database right 2023.
Contains Environment Agency Information © Environment Agency and database right 2023. All rights reserved.

This document is the property of Jeremy Benn Associates Ltd. It shall not be reproduced in whole or in part, nor disclosed to a third party, without the permission of Jeremy Benn Associates Ltd.


MALDON DISTRICT COUNCIL LEVEL 1 STRATEGIC FLOOD RISK ASSESSMENT




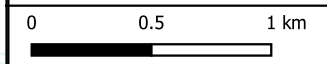
Legend

 Maldon District Boundary

2070s Climate change uplifted Risk of Flooding from Surface Water - extent

 3.3% AEP +35% Climate Change

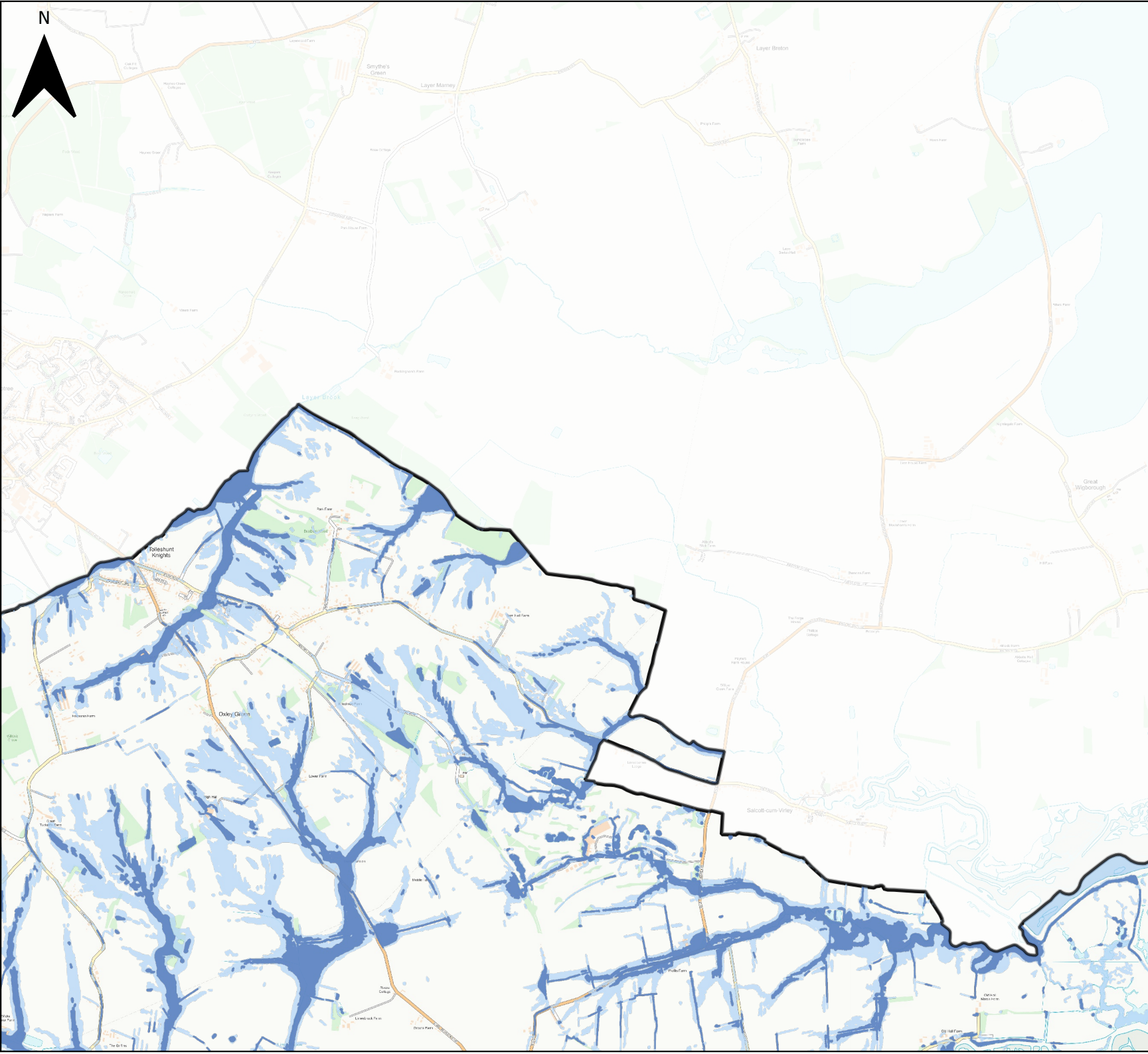
 1% AEP +45% Climate Change



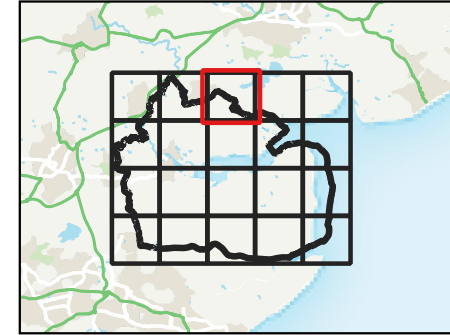
Contains Ordnance Survey data © Crown copyright and database right 2023.
Contains Environment Agency Information © Environment Agency and database right 2023. All rights reserved.

This document is the property of Jeremy Benn Associates Ltd. It shall not be reproduced in whole or in part, nor disclosed to a third party, without the permission of Jeremy Benn Associates Ltd.






**MALDON DISTRICT COUNCIL LEVEL 1
STRATEGIC FLOOD RISK ASSESSMENT**




Legend

 Maldon District Boundary

**2070s Climate change uplifted
Risk of Flooding from Surface
Water - extent**

 3.3% AEP +35% Climate Change

 1% AEP +45% Climate Change

0 0.5 1 km

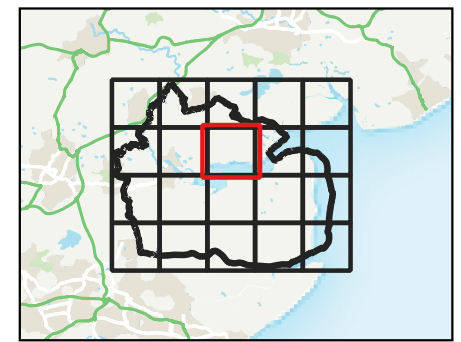
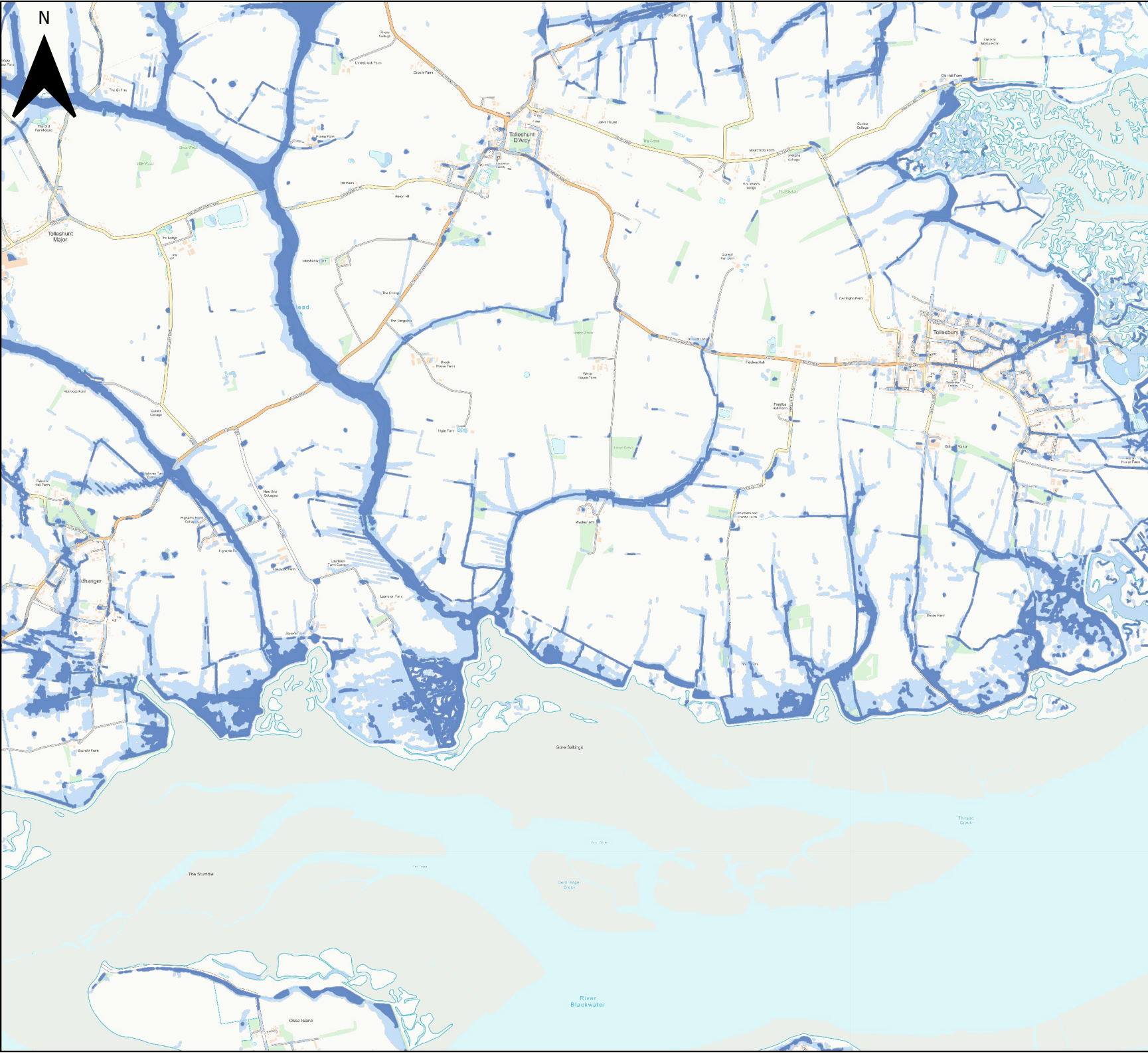


Contains Ordnance Survey data © Crown copyright and database right 2023.
Contains Environment Agency Information © Environment Agency and database right 2023. All rights reserved.

This document is the property of Jeremy Benn Associates Ltd. It shall not be reproduced in whole or in part, nor disclosed to a third party, without the permission of Jeremy Benn Associates Ltd.




MALDON DISTRICT COUNCIL LEVEL 1 STRATEGIC FLOOD RISK ASSESSMENT




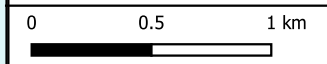
Legend

 Maldon District Boundary

2070s Climate change uplifted Risk of Flooding from Surface Water - extent

 3.3% AEP +35% Climate Change

 1% AEP +45% Climate Change



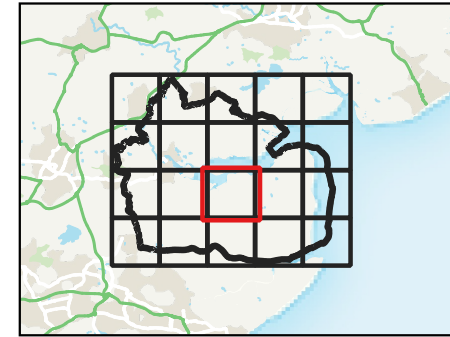
Contains Ordnance Survey data © Crown copyright and database right 2023.
Contains Environment Agency Information © Environment Agency and database right 2023. All rights reserved.

This document is the property of Jeremy Benn Associates Ltd. It shall not be reproduced in whole or in part, nor disclosed to a third party, without the permission of Jeremy Benn Associates Ltd.






MALDON DISTRICT COUNCIL LEVEL 1 STRATEGIC FLOOD RISK ASSESSMENT




Legend

 Maldon District Boundary

2070s Climate change uplifted Risk of Flooding from Surface Water - extent

 3.3% AEP +35% Climate Change

 1% AEP +45% Climate Change

0 0.5 1 km

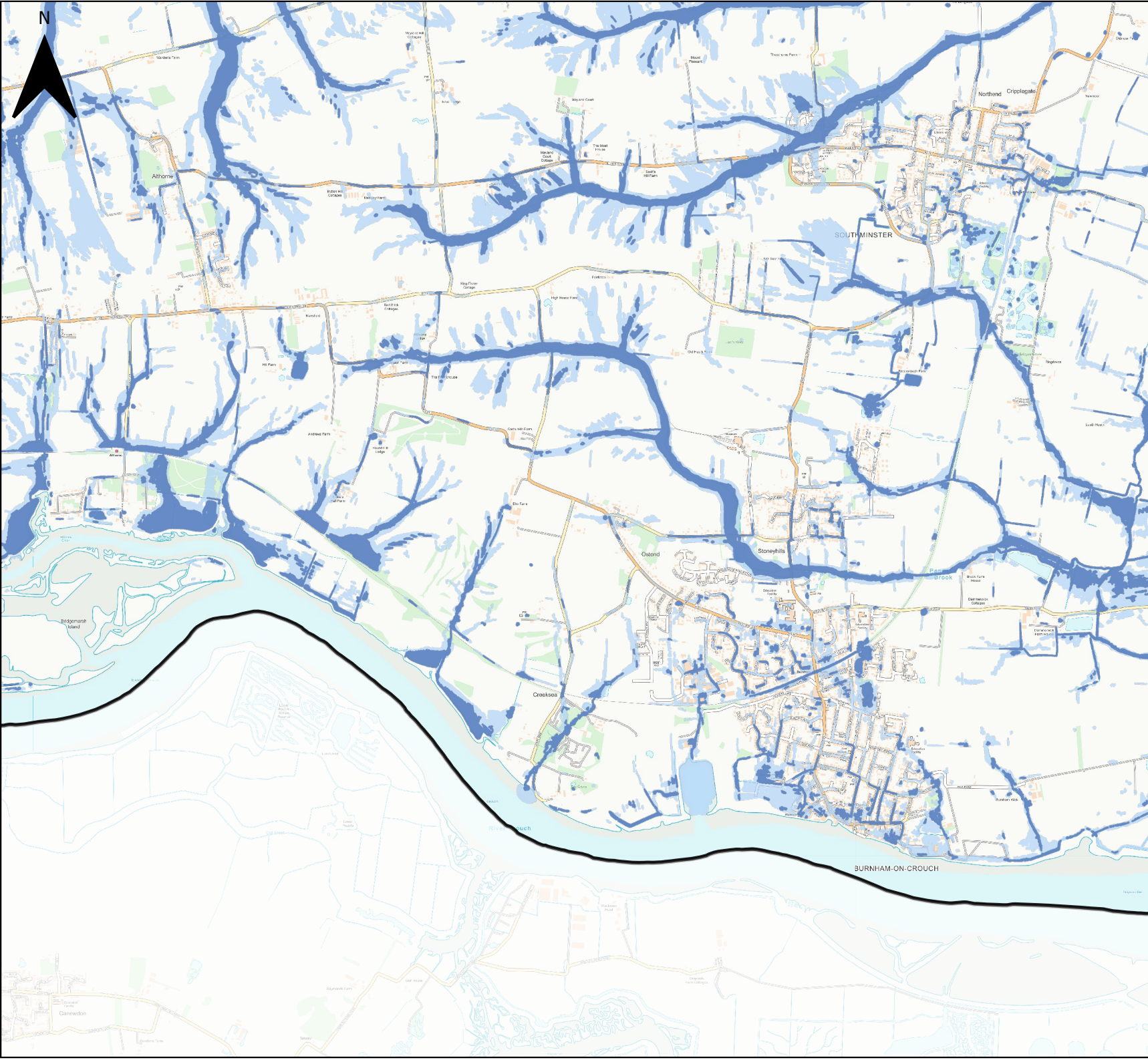
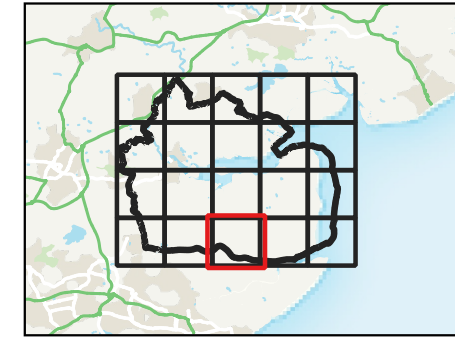


Contains Ordnance Survey data © Crown copyright and database right 2023.
 Contains Environment Agency Information © Environment Agency and database right 2023. All rights reserved.

This document is the property of Jeremy Benn Associates Ltd. It shall not be reproduced in whole or in part, nor disclosed to a third party, without the permission of Jeremy Benn Associates Ltd.




MALDON DISTRICT COUNCIL LEVEL 1 STRATEGIC FLOOD RISK ASSESSMENT




Legend

 Maldon District Boundary

2070s Climate change uplifted Risk of Flooding from Surface Water - extent

 3.3% AEP +35% Climate Change

 1% AEP +45% Climate Change

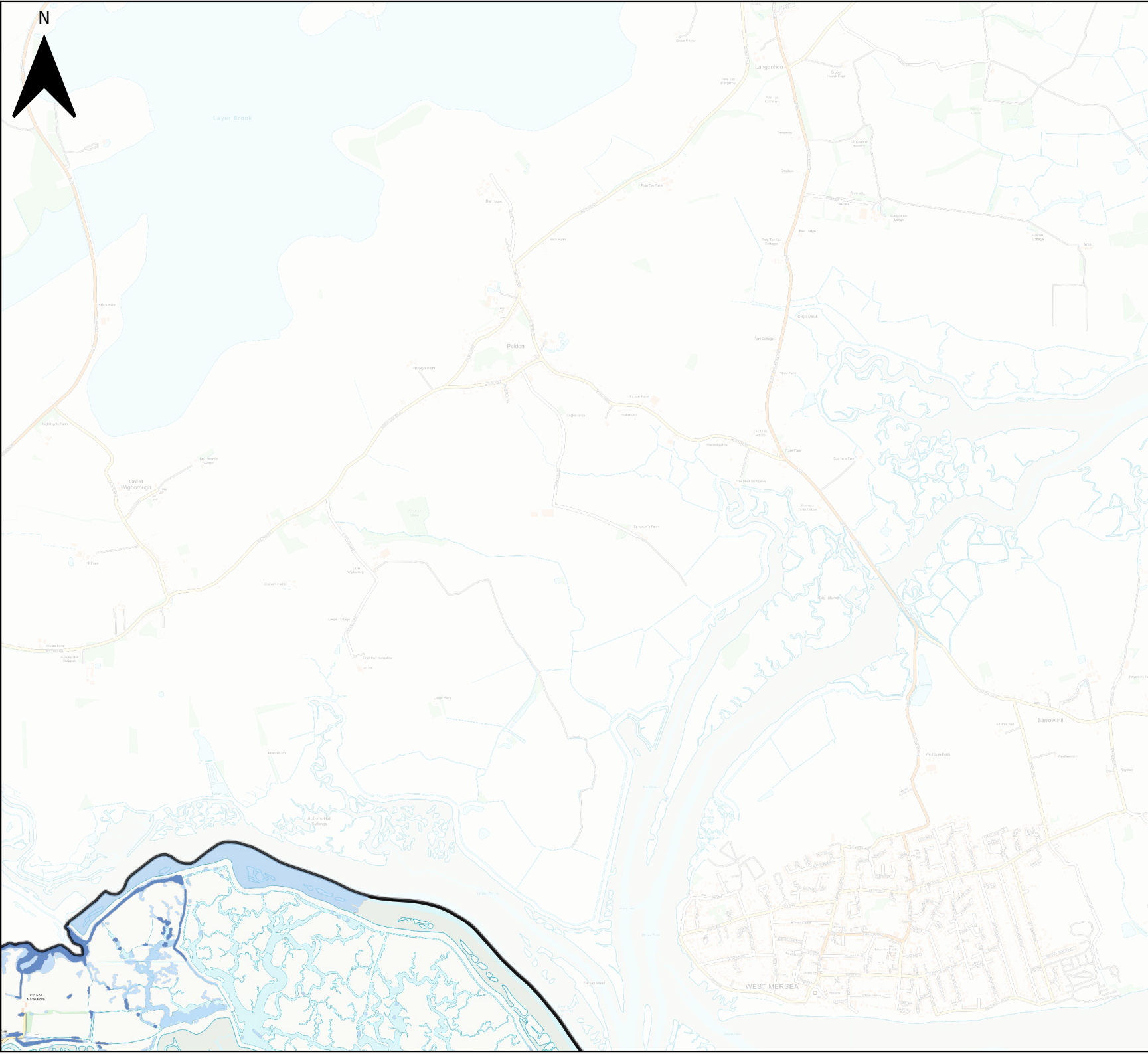
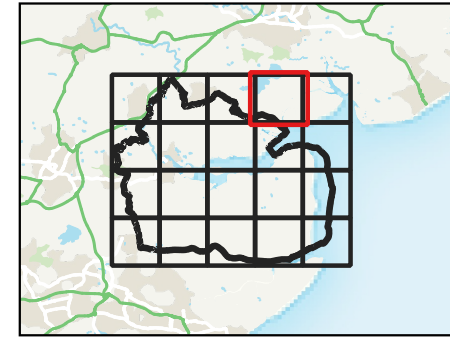
0 0.5 1 km



Contains Ordnance Survey data © Crown copyright and database right 2023.
Contains Environment Agency Information © Environment Agency and database right 2023. All rights reserved.

This document is the property of Jeremy Benn Associates Ltd. It shall not be reproduced in whole or in part, nor disclosed to a third party, without the permission of Jeremy Benn Associates Ltd.


MALDON DISTRICT COUNCIL LEVEL 1 STRATEGIC FLOOD RISK ASSESSMENT




Legend

 Maldon District Boundary

2070s Climate change uplifted Risk of Flooding from Surface Water - extent

 3.3% AEP +35% Climate Change

 1% AEP +45% Climate Change

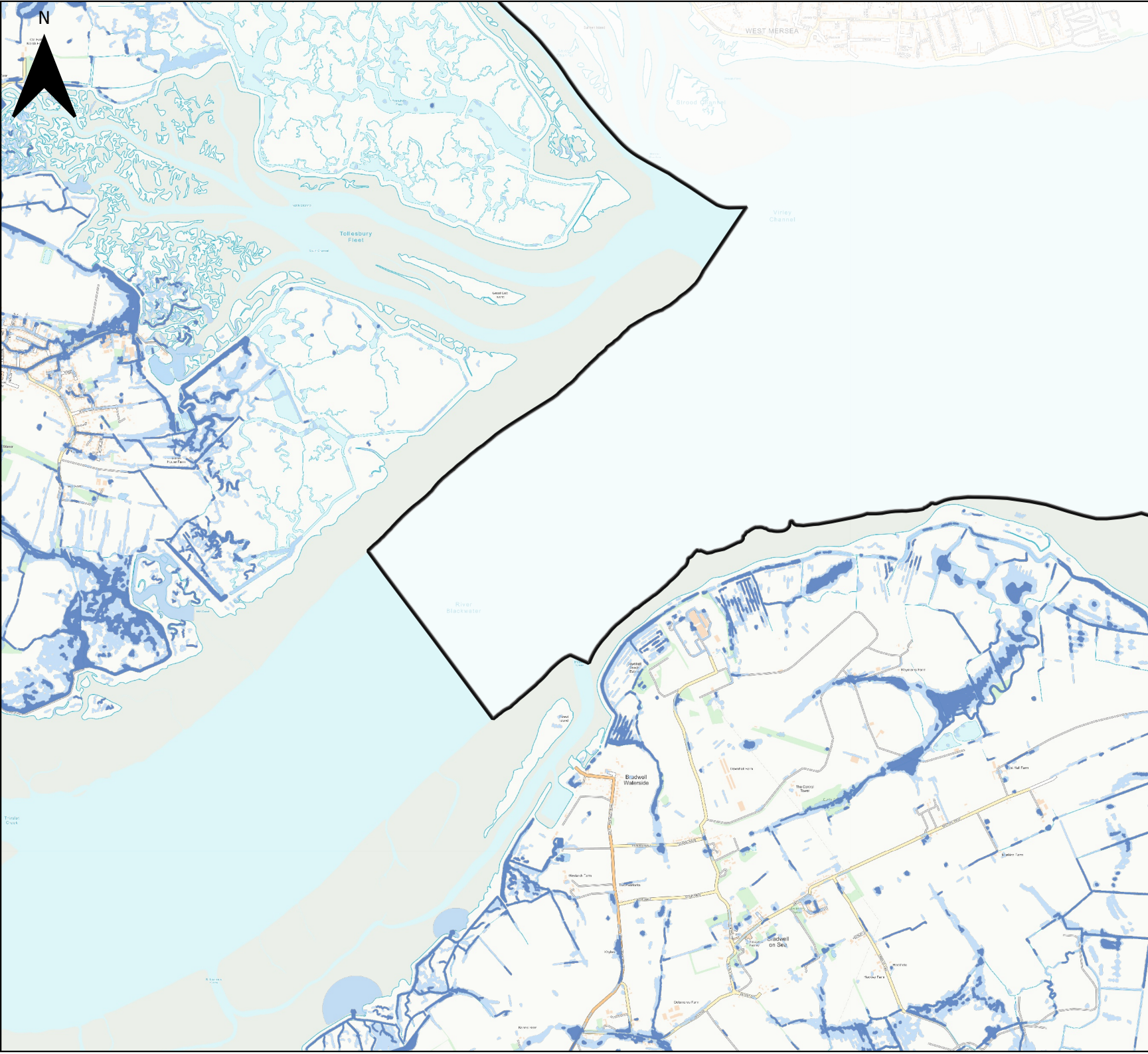
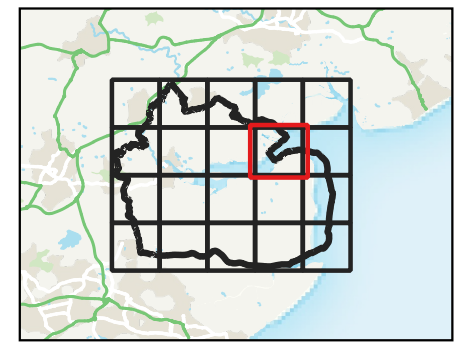
0 0.5 1 km



Contains Ordnance Survey data © Crown copyright and database right 2023.
Contains Environment Agency Information © Environment Agency and database right 2023. All rights reserved.

This document is the property of Jeremy Benn Associates Ltd. It shall not be reproduced in whole or in part, nor disclosed to a third party, without the permission of Jeremy Benn Associates Ltd.


MALDON DISTRICT COUNCIL LEVEL 1 STRATEGIC FLOOD RISK ASSESSMENT




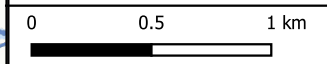
Legend

 Maldon District Boundary

2070s Climate change uplifted Risk of Flooding from Surface Water - extent

 3.3% AEP +35% Climate Change

 1% AEP +45% Climate Change

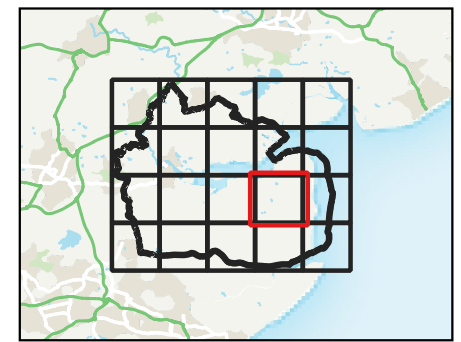


Contains Ordnance Survey data © Crown copyright and database right 2023.
Contains Environment Agency Information © Environment Agency and database right 2023. All rights reserved.

This document is the property of Jeremy Benn Associates Ltd. It shall not be reproduced in whole or in part, nor disclosed to a third party, without the permission of Jeremy Benn Associates Ltd.




MALDON DISTRICT COUNCIL LEVEL 1 STRATEGIC FLOOD RISK ASSESSMENT




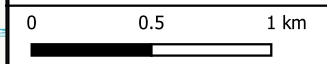
Legend

 Maldon District Boundary

2070s Climate change uplifted Risk of Flooding from Surface Water - extent

 3.3% AEP +35% Climate Change

 1% AEP +45% Climate Change

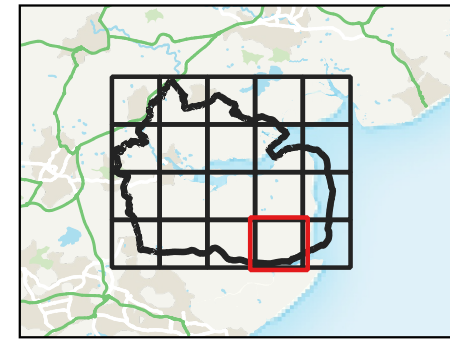
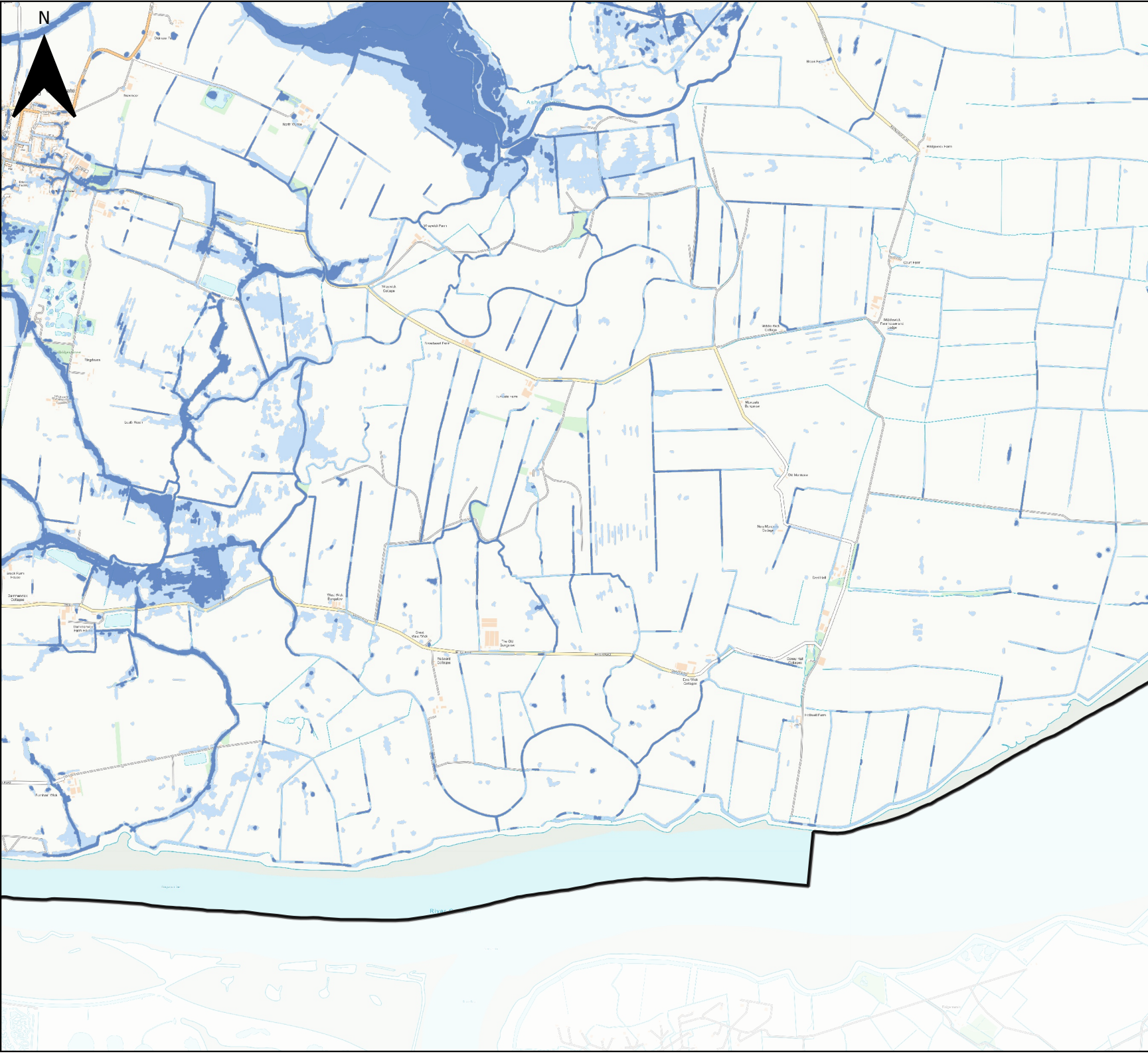


Contains Ordnance Survey data © Crown copyright and database right 2023.
 Contains Environment Agency Information © Environment Agency and database right 2023. All rights reserved.

This document is the property of Jeremy Benn Associates Ltd. It shall not be reproduced in whole or in part, nor disclosed to a third party, without the permission of Jeremy Benn Associates Ltd.




MALDON DISTRICT COUNCIL LEVEL 1 STRATEGIC FLOOD RISK ASSESSMENT




Legend

 Maldon District Boundary

2070s Climate change uplifted Risk of Flooding from Surface Water - extent

 3.3% AEP +35% Climate Change

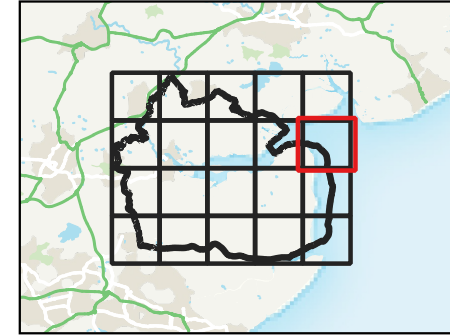
 1% AEP +45% Climate Change

0 0.5 1 km



Contains Ordnance Survey data © Crown copyright and database right 2023.
Contains Environment Agency Information © Environment Agency and database right 2023. All rights reserved.

This document is the property of Jeremy Benn Associates Ltd. It shall not be reproduced in whole or in part, nor disclosed to a third party, without the permission of Jeremy Benn Associates Ltd.




N




Legend

 Maldon District Boundary

**2070s Climate change uplifted
Risk of Flooding from Surface
Water - extent**

 3.3% AEP +35% Climate Change

 1% AEP +45% Climate Change

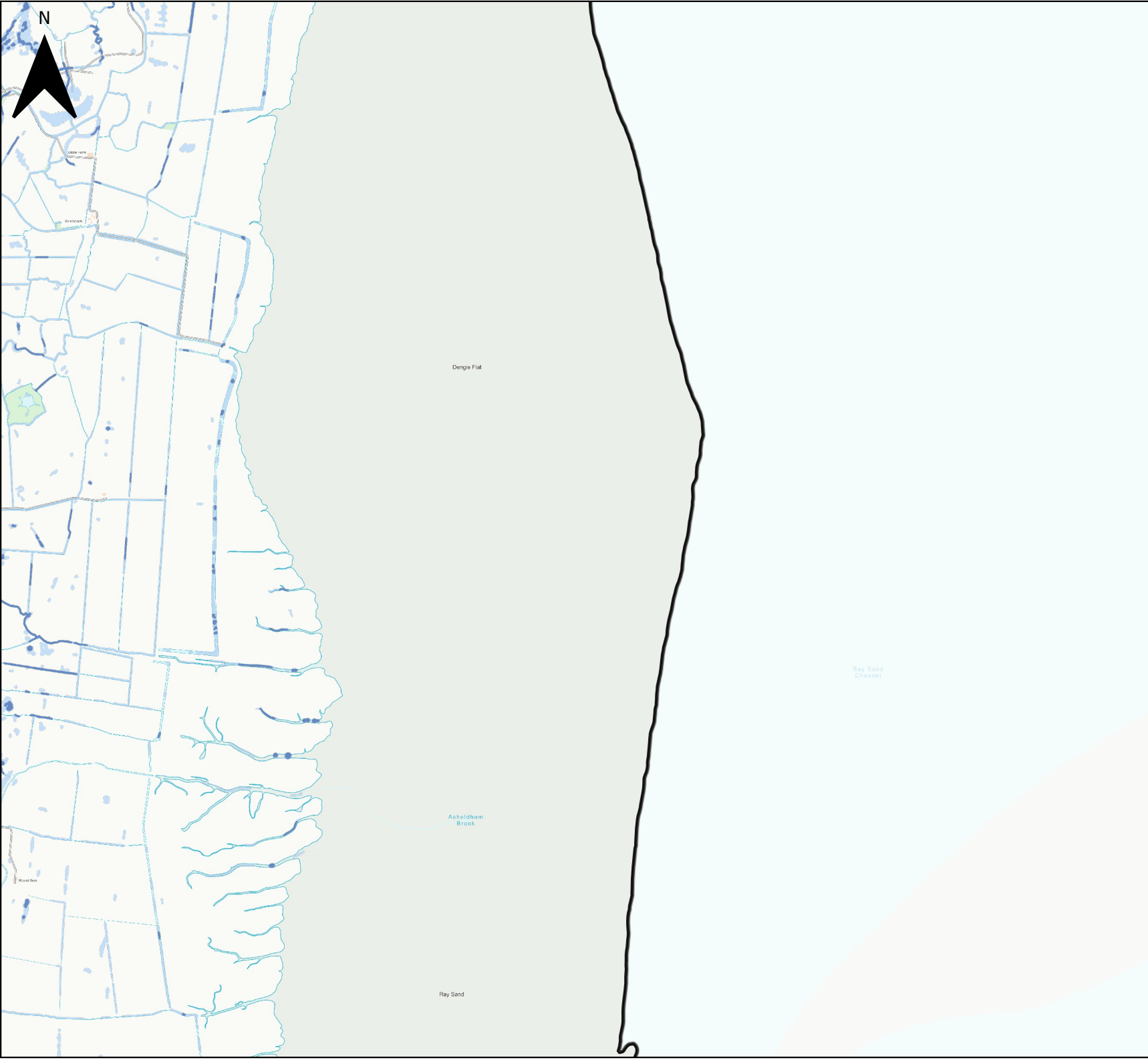
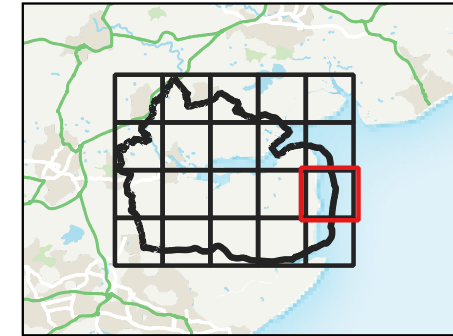
0 0.5 1 km



Contains Ordnance Survey data © Crown copyright and database right 2023.
Contains Environment Agency Information © Environment Agency and database right 2023. All rights reserved.

This document is the property of Jeremy Benn Associates Ltd. It shall not be reproduced in whole or in part, nor disclosed to a third party, without the permission of Jeremy Benn Associates Ltd.







Legend

 Maldon District Boundary

**2070s Climate change uplifted
Risk of Flooding from Surface
Water - extent**

 3.3% AEP +35% Climate Change

 1% AEP +45% Climate Change

0 0.5 1 km

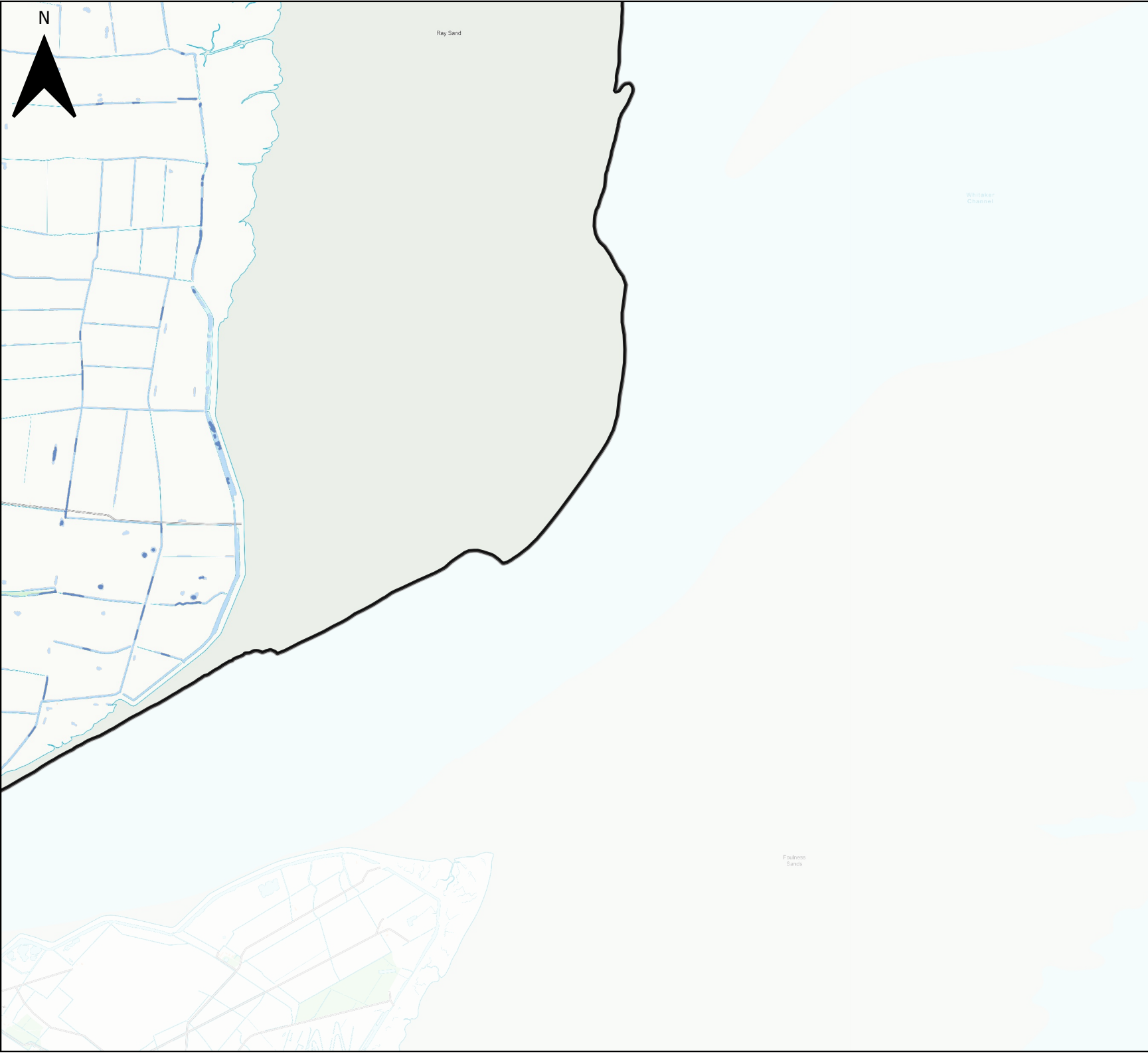
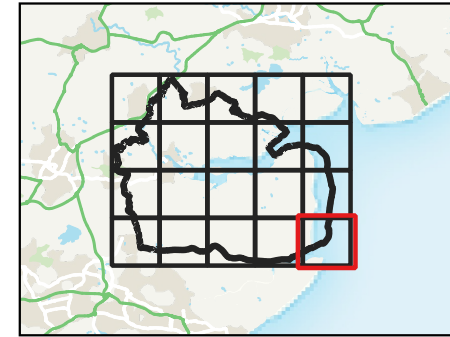


Contains Ordnance Survey data © Crown copyright and database right 2023.
Contains Environment Agency Information © Environment Agency and database right 2023. All rights reserved.

This document is the property of Jeremy Benn Associates Ltd. It shall not be reproduced in whole or in part, nor disclosed to a third party, without the permission of Jeremy Benn Associates Ltd.




MALDON DISTRICT COUNCIL LEVEL 1 STRATEGIC FLOOD RISK ASSESSMENT




Legend

 Maldon District Boundary

2070s Climate change uplifted Risk of Flooding from Surface Water - extent

 3.3% AEP +35% Climate Change

 1% AEP +45% Climate Change

0 0.5 1 km



Contains Ordnance Survey data © Crown copyright and database right 2023.

Contains Environment Agency Information © Environment Agency and database right 2023. All rights reserved.

This document is the property of Jeremy Benn Associates Ltd. It shall not be reproduced in whole or in part, nor disclosed to a third party, without the permission of Jeremy Benn Associates Ltd.

